



# THE Oasis

1946



*The 1946*



*Oasis*



# *The 1940*

Published Annually By The  
ASSOCIATED STUDENTS OF NORTHWEST NAZARENE COLLEGE  
Nampa, Idaho



RED FISH LAKE  
Central Idaho

# *Oasis*

VIRGINIA RICKMAN

Editor-in-Chief

BILL BUTLER

Business Manager





Essentially the theme of every college annual is student life; so it is with this one. The students supply the theme and the material collected within the book. Actually it is a record





of the work and play that consumed a year at college. With this in mind, The 1946 Oasis has been published so that the activities created by the students may become lingering memories in the future.

*a new world*





DR. MAUD R. RICE



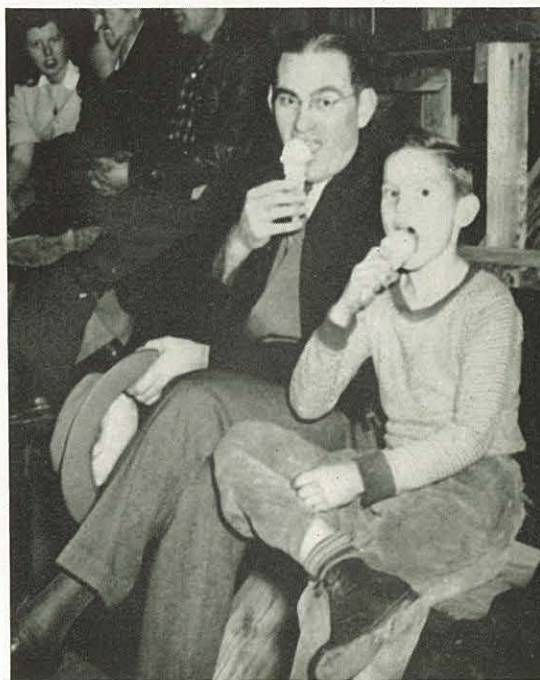
# *Dedication*

To Dr. Maud R. Rice, Professor of Chemistry and Biological Science, in appreciation of her years of service to this institution, always rendered with characteristic geniality and good fellowship, and in tribute to her beautiful Christian life which is an inspiration to all, this 1946 Oasis is dedicated with affection and esteem.



# *C o n t e n t s*

- I ADMINISTRATION
- II CLASSES
- III ORGANIZATIONS
- IV ATHLETICS
- V FEATURES





# *In Memoriam*

The world will little note, nor long remember what we say here, but it can never forget what they did here. It is for us the living, rather, to be dedicated here to the unfinished work which they who fought here have thus far so nobly advanced. It is rather for us to be here dedicated to the great task remaining before us—that from these honored dead we take increased devotion to that cause for which they gave the last full measure of devotion; that we here highly resolve that these dead shall not have died in vain; that this nation, under God, shall have a new birth of freedom; and that government of the people, by the people, for the people, shall not perish from the earth.

Abraham Lincoln

☆ CALLIHAN, P. J.

☆ MOSTELLER, LYLE

☆ POOLE, EVERETT

☆ REINHOLDT, GEORGE M.

☆ STINETTE, WAYNE







# Campus Shots



Familiar scenes... students standing on steps talking over last hour's quiz... the dorms that we lived in for nine months of the year... the well-used walks crossing the campus... small groups gathering on the way to the dining hall at noon... these scenes may be remembered when other phases of college are forgotten.



The Administration Building . . . long remembered by all of us as the scene of many and varied classes . . . Church services in the chapel where many have settled the ultimate goal of their life's journey.







At Morrison Hall, home of the majority of on-campus college co-eds...daylight and dark, students enjoying the companionship of students...intellectually inspired, they tread life's path shoulder to shoulder with a unanimity of purpose.

Big trees shading the walks...  
bright sunshine...and white  
clouds enhancing the beauty of  
the campus on a warm spring  
day...Gideon Hall, home of all  
on-campus males.



Certainly college would be incomplete and drab  
were it not for those pleasant moments of relaxation  
away from classrooms and lectures...spent in the  
cultivation of long to be remembered friendships.

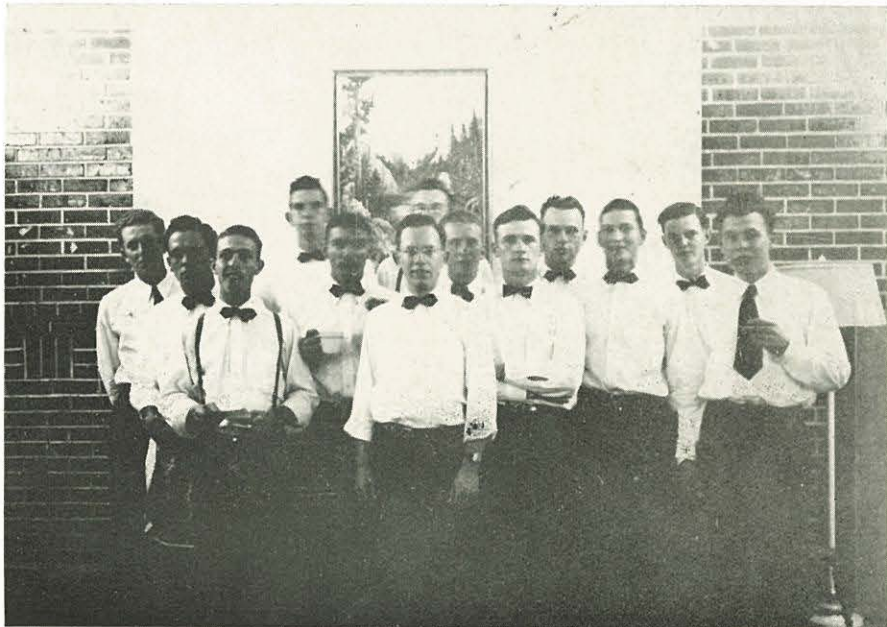
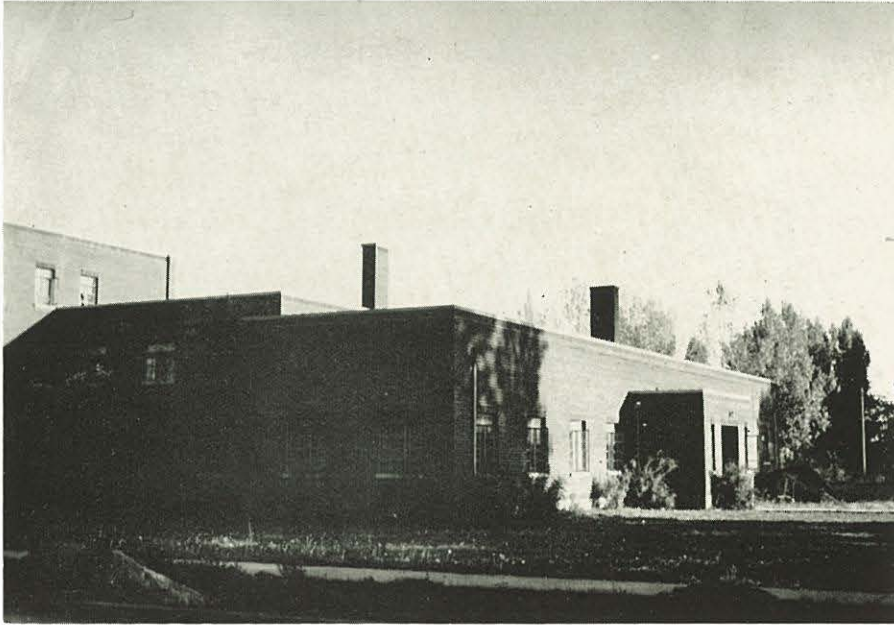






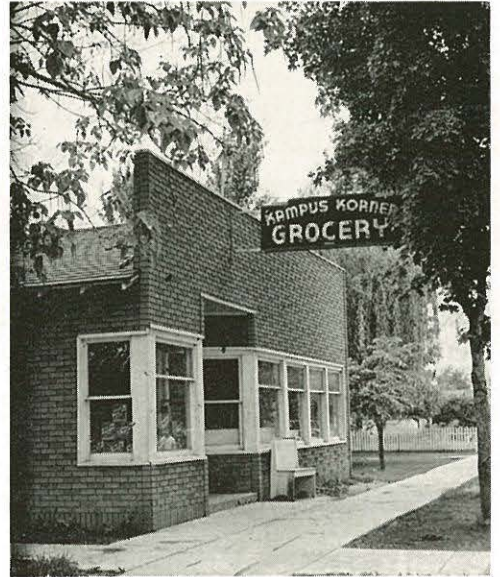
The R. T. Williams Library...this is a place where students spend some of their time...studying for an evening...location of publication and professors' offices.

The Dining Hall...perennially the recipient of  
the most uncomplimentary remarks in the world  
...where tardiness is relatively uncommon.

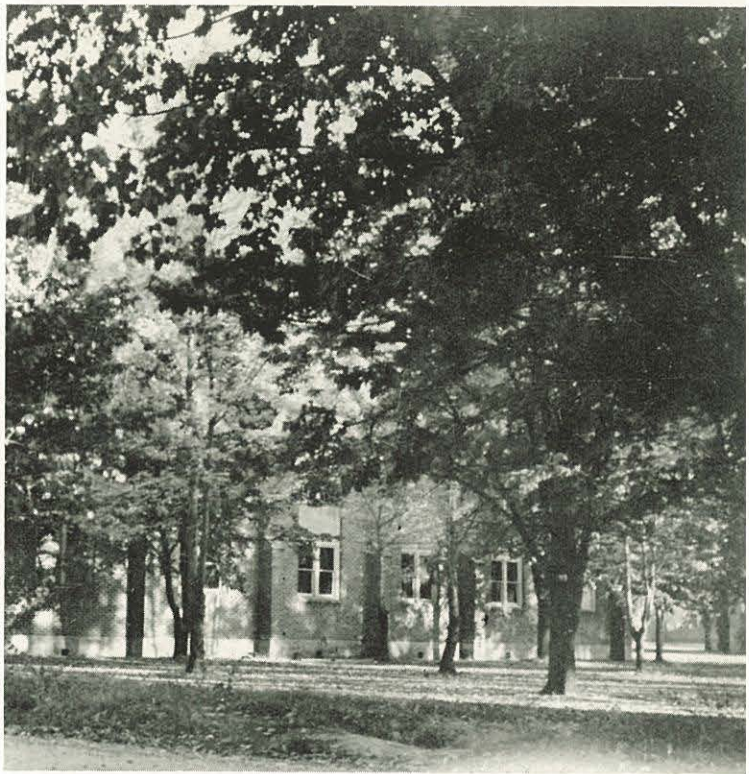




Kampus Korner...where students gather in groups between classes...cokes, hamburgers, or coffee...hours of leisure are spent here.



A front view of Hadley Hall, another home of on-campus co-eds...with its deep shadows on a lazy afternoon when students feel like lying in the shade and forgetting all their worries and cares.



Across the campus stands the Gymnasium... guardian of balls, nets, and mats... scene of many exciting games... basketball, volleyball, tumbling... classroom for future athletes.





The Grammar School...training school for elementary teachers...classes completed...another day well spent.

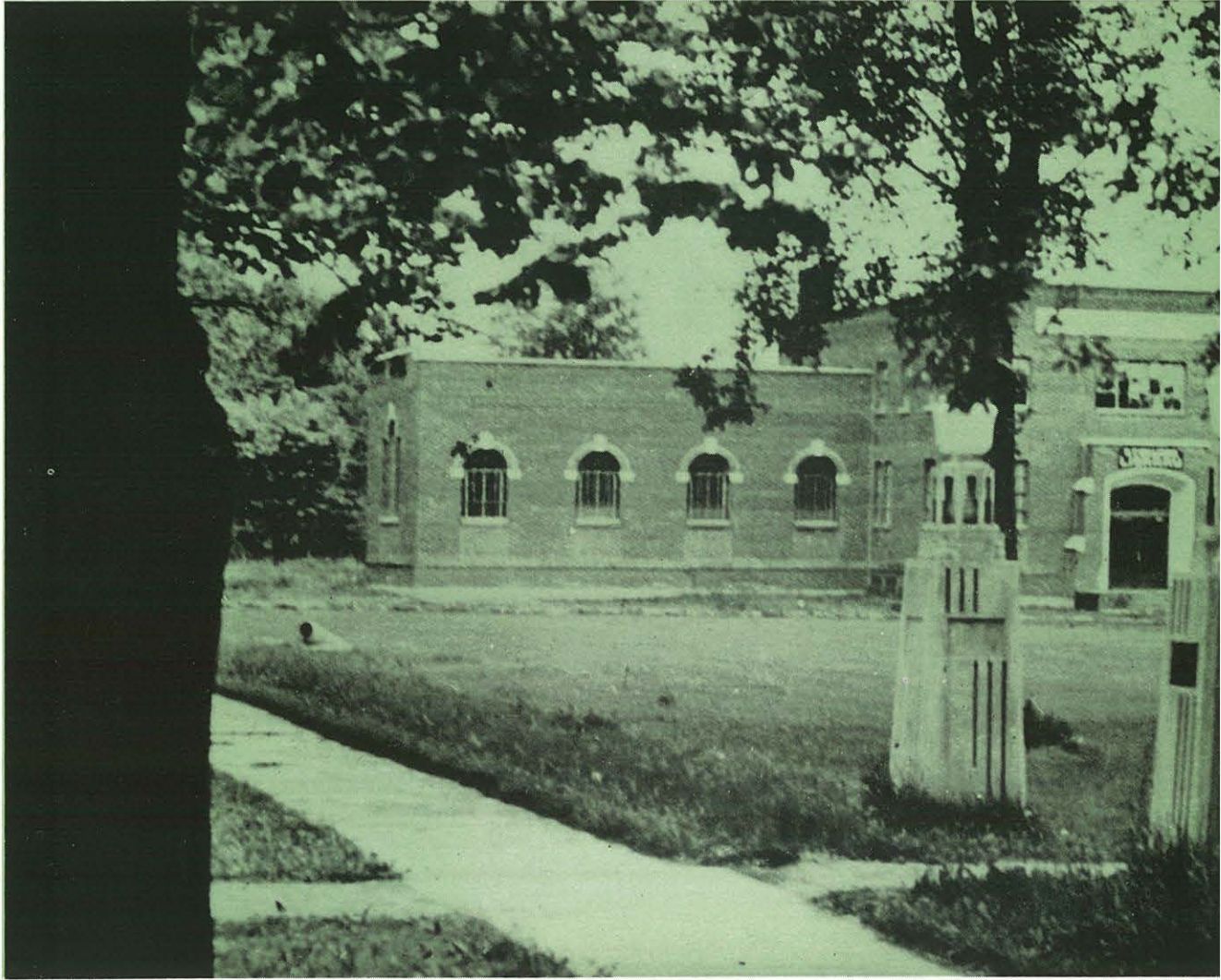


A view of the Music Hall  
...where many hours are  
spent making music...a  
place where beautiful melo-  
dies make students forget  
all their worries and cares.

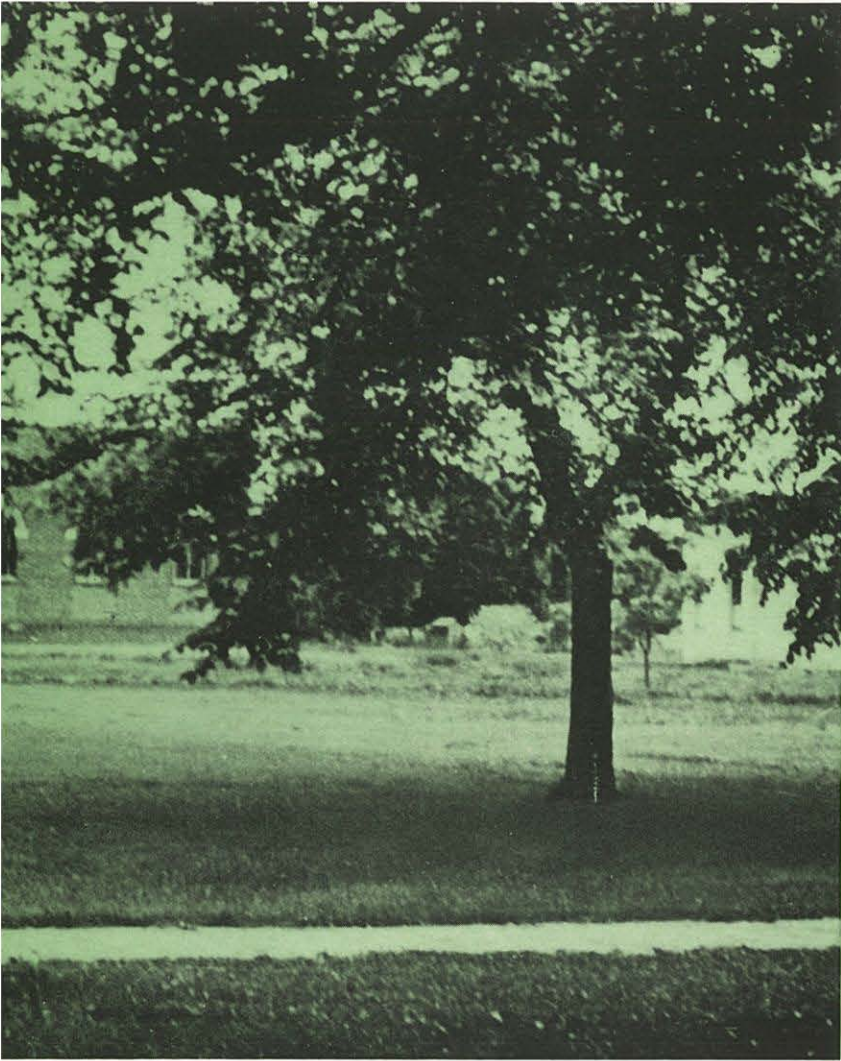


Briarwood Hall and Parkview Home...new additions necessitated by large influx of girls...inviting hours of leisure and enjoyment are spent within these walls.





*Administra*



R. T. WILLIAMS LIBRARY

*ation*

BOARD OF REGENTS  
FACULTY ADMINISTRATION  
STUDENT LEADERS





DR. E. E. MARTIN  
Chairman

# Boara

Molding and shaping the present and future of N.N.C., the Board of Regents is that friendly, intelligent body that assembles each year to determine many of the school's policies.

Students always enjoy talking with the various members and hearing them speak in chapel.

Meeting March 13 and 14 this year, the Regents approved the construction of the new men's dormitory and participated in the ground-breaking ceremony.

Ground-breaking for boys' dormitory



# of Regents



Ground was officially broken Thursday, March 14, for the construction of a new \$120,000 men's dormitory on the campus of N. N. C., with Dr. Corlett turning the first shovel of dirt.

Dr. Martin, chairman of the Board of Regents, said, in a brief address, "Colleges don't just happen. They are the result of vision, of genius, and the genius of this institution is a deep religious conviction."



F a



DR. L. T. CORLETT, A.B., D.D.

President of College  
Professor of Homiletics

Perceives his trust and keeps faith with it...capable leader...inspiring teacher and guide...one who accomplishes projects...unfailing trust in God...pursuer of the best in each day's store... "He taught, but first he followed it himself."

# Faculty

GISH, DELBERT R., Ph.D.  
Professor of Philosophy

EMERSON, J. CALVIN, M.S.  
Financial Executive  
Professor of Chemistry

WILSON, MALLALIEU A., M.A.  
Registrar  
Professor of Speech

RILEY, JOHN E., A.M.  
Pastor of College Church  
Lecturer in Theology

DOOLEY, BERTHA R., M.A.  
Professor of English  
Professor of Greek

WASHBURN, MARIAN B., M.A.  
Professor of English

DEMME, JUANITA L., M.A.  
Professor of Romance Languages

BOWER, MAY E., M.A.  
Professor of Sociology  
Professor of Education

CULVER, THELMA B., M.Ed.  
Professor of Secondary Education  
On leave of absence





# Faculty



SUTHERLAND, FRANCIS C.,  
M.A., S.T.L.  
Professor of History



RICE, MAUD R., Ph.D.  
Professor of Chemistry and  
Biological Science



TILLOTSON, DONALD B., M.A.  
Professor of Mathematics  
and Physics



LAUGHLIN, DONALD G., A.B.  
Principal of Academy  
Director of Grammar School



ALLISON, ETHEL G., M.A.  
Professor of Elementary Education



SHARP, GUY E., M.A.  
High School Critic Teacher



WILSON, HELEN, A.B.  
High School Critic Teacher



TRUE, ESTHER, A.B.  
High School Critic Teacher



DAVIS, WANDA  
High School Critic Teacher

PHILLIPS, EUNICE, A.B.  
Principal Grammar School  
Elementary Critic Teacher

LAUGHLIN, MATILDA  
Elementary Education Certificate  
Elementary Critic Teacher



RAY, ROY F., A.B., B.D.  
Professor of Religious Education  
and Biblical Literature

MUMAU, GENEVA, A.B.  
Librarian

CORLETT, ELBA, B.S.  
Assistant Librarian

WESCHE, HENRY C., M.D.  
College Physician

TAYLOR, E. ROGER, A.B., B.Mus.  
Professor of Voice

SULLIVAN, DAVID J.  
Student Assistant in Voice

ARNESON, ESTHER  
Student Assistant in Voice

SWANN, ALLINE, M.Mus.  
Professor of Piano, Pipe Organ,  
and Music Theory  
Director of Orchestra

EDGAR, CHARLOTTE H., B.Mus.  
Instructor in Piano and  
Music Theory



# Faculty



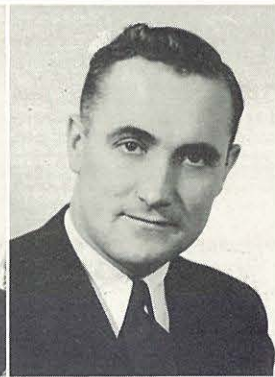
PETERSON, DOROTHY  
Student Assistant in Piano

ERNEST, LIBERTY  
Student Assistant in Piano

REED, MARJORIE  
Student Assistant in Piano

SULLIVAN, ALFRED  
Student Assistant in Speech

FINKBEINER, ARNOLD J., B.F.A.  
Professor of Art



MJASETH, MARGARET  
Assistant in Art

OLDFIELD, MARGARET  
Student Assistant in Art

SPURBECK, AUDREY  
Student Assistant in Art



JANOSKY, JOSEPH J., A.B.,  
M.C.S.  
Professor of Business  
Administration

ERNEST, ELEANOR, A.B.  
Instructor in Business  
Administration

CARLSON, ELAINE K., A.B.  
Instructor in Home Economics



LEE, LAMONT, A.B., Th.B.  
Instructor in Physical Education

BELLAMY, MAISIE  
Student Assistant in Physical  
Education

HOSTETTER, BERYL  
Bookkeeper

WALLER, HELEN  
Secretary

BONNER, ALETHA  
Secretary

TAIT, MRS. M. T.  
Dietician

CHERRINGTON, HAZEL  
Hostess of Morrison Hall

DAVIS, ESTHER  
Hostess of Hadley Hall

KLUNDT, RUDIE  
Supervisor of Gideon Hall



THOMPSON, HOWARD  
Supervisor of Gideon Hall





ED DOWD  
President



BOB SPORLEDER  
Vice-President



ARDETH GROVER  
Secretary



DAVID NYBERG  
Treasurer

Peace... world co-operation... the atomic age... demobilization... return of the boys... normalcy. These were the things the world had bled, sweat, and prayed for. And now they have come, and N. N. C. has already felt the change from war to peace. The relaxation of wartime strain has brought fresh courage and hope to each of us. Anticipation runs high. The first postwar year holds many promises of peaceful activity.

*Studen*

EARL EMERSON  
Sergeant-at-Arms

VERONA TAVES  
Senior Representative

WALLACE ROSEBORO  
Junior Representative



DR. DELBERT R. GISH  
Sponsor



HOWARD ZIMMERMAN  
Sophomore Representative,  
first semester

MARY WESCHE  
Sophomore Representative,  
second semester

ELDON SNYDER  
Freshman Representative

Men from all branches of the Armed Forces have returned with Christian character and zeal, and have added to the spiritual atmosphere which is typical of N. N. C. This year has been blessed of God to our lives. May He grant to N. N. C. an even more fruitful future in the Kingdom of Christ Jesus.

Ed L. Dowd—President.

*Council*







---

*Seniors*





ALFRED SULLIVAN  
President

# *Seniors*

Exceptional qualities of leadership... dignity and seriousness... creative... huge capacity for shared fun... enthusiasm... constructive and purposeful... excelling in many fields... warm comradeship felt among all its members... influential in the N. N. C. scene... pronounced intellectuality... consecrated Christians.



AGGOLA, L. LEONA

A.B. Sociology  
Transferred from State Teachers' College, Valley City, N. Dak., Chicago Evangelistic Institute, Murphy School of Business, Greenville College, Greenville, Ill. Lambda Sigma Pi; Treasurer, Christian Workers' Band, 7-8; President, Foreign Mission Band, 7-8; International Relations Club, 8; Jamestown, North Dakota.

ALLEE, BEN  
Not graduating

BECK, NESTA  
A.B. Biological Science  
Transferred from Marion College, Marion, Indiana. Alpha Delta Phi; Foreign Mission Band, 5-6-7-8; Associated Women Students, 5-6-7-8; Alliance, Ohio.

BRUNER, MARIE  
B.S. Nursing  
Lambda Sigma Pi; Christian Workers' Band, 7-8; Associated Women Students, 7-8; Foreign Mission Band, 7-8; Ridgefield, Washington.

CAMERON, LORENE  
A.B. Education  
Lambda Sigma Pi; Graduate of Normal Department; Elementary Critic Teacher; Girl Scout Leader, 5-6-7-8; A Cappella, 5-6-7-8; F. T. A., 7-8; Nampa, Idaho.

CLOUGH, HOMER L.  
A.B. History  
Sigma Lambda Alpha; President, International Relations Club, 3; Treasurer, S. L. A., 6; Treasurer Junior Class, 5-6; Christian Workers' Band, 1-2-3-4-5-6-7-8; Buffalo, Kansas.

COZAD, FAITH JOHNSON  
A.B. Home Economics  
Olympian; Girls' Glee Club, 1; Philharmonic, 1-3-5; Oasis Staff, 3-4; Home Ec. Club, 3-4-8; F. T. A., 5-6-7-8; President, Minnesota State Band, 5-6-7-8; Christian Workers' Band, 1-2-3-4-5-6-7-8; Corouso, Minnesota.



DAVIS, WANDA  
A.B. Mathematics  
Alpha Delta Phi; Who's Who, 5-6-7-8; Senior Scholarship, 7-8; Editor, Crusader, 5-6; Reporter, Crusader, 2-3-4; Ass't Literary Editor, Oasis, 3-4; Zeta Kappa Rho, 3-4-5-6-7-8; F. T. A., 5-6-7-8; President, State Band, 5-6; Everett, Washington.

DOWD, ED  
A.B. Philosophy  
Transferred from Willamette University. Sigma Lambda Alpha; President, Spencerian Speech Club, 3; Program Chairman, S. L. A., 4; Varsity Basketball, 3-4; Varsity Debate, 4-6-8; President, S. L. A., 5; Vice President, Associated Students, 5; President, Associated Students, 7-8; Cappella Choir, 3-4-5-6; Who's Who, 5-6-7-8; All-school Play, 8; Sale Oregon.

ELMORE, EMERSON  
Not graduating

ERNEST, ELVIN  
A.B. Speech

Transferred from Miltonvale Wesleyan College, Miltonvale, Kansas. Sigma Lambda Alpha; Chaplain, S. L. A.; President, Spencerian Speech Club, 7-8; President, Christian Workers' Band, 7-8; Varsity Debate, 8; Philharmonic, 3; Mixed Chorus, 4; Zeta Kappa Rho, 1-2-3-4-5-6-7-8; Burlington, Colorado.







#### HARMAN, MARY E.

A.B. Home Economics

Alpha Delta Phi; President, F. T. A., 1-6-7-8; Vice-President, Home Ec. Club, 5-6; Secretary, Senior Class, 8; Program Chairman, A. D. P., 5; Reporter, Crusader, 7-8; Who's Who, 1-8; Christian Workers' Band; Casper, Wyoming.

#### HILLS, ORIN E.

A.B. Sociology

Olympian; President, Oly, 5-7; Athletic Director, Oly, 8; Varsity Basketball, 3-4-5-6-7-8; Jr. Varsity Basketball, 1-2; F. T. A., 7-8; Vice-President, N Club, 7-8; Band, 1-2-3; Orchestra, 4-5-6; Glee Club, 1-2; Philharmonic, 1-3-7; Sports Editor, Crusader, 7-8; Who's Who, 7-8; Twin Falls, Idaho.

#### JENSEN, EILEEN

A.B. Home Economics

Alpha Delta Phi; University of North Dakota, 5-6; Minot State College; Band, 1-2-3-4; Secretary, A Cappella, 1-2-3-4; A Cappella, 3-4-7-8; Glee Club, 1-3-4; Philharmonic, 1-2-3-4-7-8; Reporter, Crusader, 3-4-7-8; Program Chairman, A. D. P., 7; Program Chairman, Home Ec. Club, 7-8; Dorm Council, 7; Grand Forks, North Dakota.

#### KINCAID, JOYCE PAULINE

A.B. Education and Art

Alpha Delta Phi; Librarian, Orchestra, 1-2-3-4-5-6-7-8; Philharmonic, 1-2-3-4-5-6-7-8; A Cappella, 3-4-5-6-7-8; Music Club, 7-8; Art Scholarship, 3; Secretary, Gen'l Missionary, 7-8; Athletic Literary Council, 7; Athletic Director, A. D. P., 7; Nampa, Idaho.

#### ERNEST, LIBERTY GRIFFITHS

A.B. Music, B.Mus.

Graduate, Miltonvale Wesleyan College. Alpha Delta Phi; Mixed Chorus, 3-4; Philharmonic, 3; Music Club, 7-8; Burlington, Colorado.

#### FRAZIER, HESTER

A.B. Modern Language

Transferred from Pasadena College. Alpha Delta Phi; Philharmonic, 3-5; Mixed Chorus, 3-4; Christian Workers' Band, 1-2-3-4-5-6-7-8; Assistant Dean, Morrison Hall, 7; Yakima, Washington.

#### FRITCH, BETHEL

A.B. Speech

Lambda Sigma Pi; Philharmonic, 1; Dorm Council, 3-4; Kletzing College, 5-6; Reporter, Crusader, 3; Spencerian Speech Club, 1-2-3-4-7-8; Intramural Declamation, 2-4; Athletic Literary Council, 3-4; All-school Play, 8; Moorhead, Minnesota.

#### GAINES, GERALDINE

A.B. Speech

Transferred from Bethany Peniel College. Sigma Lambda Alpha; Zeta Kappa Rho, 5-6; A Cappella Choir, 5-6-7-8; Spencerian Speech Club, 5-6-7-8; All-school Play, 6; Secretary, S. L. A., 6; Christian Workers' Band, 5-6; Music Club, 7-8; Corpus Christi, Texas.

#### GROVER, ARDETH

B.Mus. Music Theory

Alpha Delta Phi; Secretary, A. D. P., 1-2-8, Treasurer, 4, Vice-President, 6; Zeta Kappa Rho, 3-4; Philharmonic 1-2-3-4, Secretary, 2, President, 4; A Cappella, 3-4-5-6-7-8; Orchestra, 3-4-5-6-7-8, Vice-President, 7-8; Secretary, Athletic Literary Council, 4; Secretary, Associated Students, 5-6-7-8; Secretary, Sophomore Class, 3-4; Who's Who, 5-6-7-8; Boise, Idaho.

#### HALDY, EDWARD

A.B. Religion

Graduate, Portland Bible Institute. Olympian; Treasurer, Senior Class, 8; Foreign Mission Band, 7-8; Christian Workers' Band, 7-8; Philomath, Oregon.

#### HOWELL, ROY

A.B. Religion

Olympian; Philosophy Club, 7-8; Columnist, Crusader, 7-8; Boise, Idaho.





KOLLIN, HILDA E.

B.S. Nursing

Olympian; University of Toronto; School of Nursing Teaching group, Swift Current, Saskatchewan, Canada.

LONG, DOROTHY

A.B. Mathematics and Art

Sigma Lambda Alpha; Zeta Kappa Rho, 1-2-3-4-5-6-7-8; Art Scholarship, 4; Junior Scholarship, 6; President, Zeta Kappa Rho, 7-8; Who's Who, 7-8; Secretary-Treasurer, A. W. S., 7-8; Assistant Art Instructor; Spokane, Washington.

MCDOWELL, EUGENE

A.B. Sociology

Alpha Delta Phi; Vice-President, A. D. P., 2; Spencerian Speech Club, 1-2; Christian Workers' Band, 1-2-3-4; Ass't Bus. Manager, Oasis, 3-4; Whitworth College, Spokane, 5-6; Chaplain, Men's Club, 7-8; Spokane, Washington.

LONG, RUTH

A.B. Mathematics and Art

Olympian; Orchestra 1-2-3-4-5; Girls' Glee Club, 1; Ass't Art Editor, Oasis, 5-6; Assistant Art Instructor, 7-8; Zeta Kappa Rho, 1-2-3-4-5-6-7-8; Secretary, Zeta Kappa Rho, 7-8; Bonnie Bean Orchestra Cup, 2; Art Scholarship, 4; Junior Scholarship, 6; Who's Who, 7-8; Spokane, Washington.

MIDBY, WILLARD

A.B. Philosophy

Olympian; Zeta Kappa Rho, 1-2; Oly Program Chairman, 3-4; President, Junior Class, 5-6; A Cappella Choir, 5-6; Vice-President, Philosophy Club, 7-8; Fire Chief, 7-8; Whitefish, Montana.

NEWELL, NEVA

Not graduating

OLDFIELD, PEGGY

A.B. Art

Lambda Sigma Pi; Writer, Oasis, 1-2; L. S. P. Play, 1; Vice-President, Sophomore Class, 3-4; Mixed Chorus, 3-4; Program Chairman, L. S. P., 3; Columnist, Crusader, 5-6-8; Student Council Representative, 5-6; Who's Who, 5-6-7-8; Vice-President, L. S. P., 5-6; Student Art Instructor, 3-4-5-6-7-8; Athletic Literary Council, 6; Managing Editor, Oasis, 5-6; Yakima, Washington.

POPEJOY, MARY ALICE

A.B. Home Economics

Alpha Delta Phi; A. W. S. Council, 7-8; Secretary, Home Ec. Club, 8; Vice-President, North Dakota Band; Philharmonic; F. T. A., 5-6-7-8; Fargo, North Dakota.

PHILLIPS, JESSIE

A.B. Biological Science and Art

Sigma Lambda Alpha; Christian Band; Castle Rock, Washington.

PETERSON, EDNA

A.B. Religion

Alpha Delta Phi; Christian Workers' Band; Nampa, Idaho.

ROGERS, MARCELLA WARNER

A.B. Education

Alpha Delta Phi; Philharmonic, 3-4; Ass't Dean Women, 3-4; Wessington Springs Junior College, 1-2; Kimball, South, Dakota.

PYRTLE, CAROLYN

A.B. Home Economics

Olympian; Home Ec. Club; F. T. A.; Snoqualmie, Washington.

POWELL, EUNICE

A.B. Speech

Alpha Delta Phi; Vice-President, F. T. A., 7-8; Vice-President, Speech Club, 7-8; Philharmonic, 4; F. T. A., 5-6-7-8; Spencerian Speech Club, 5-6-7-8; Varsity Debate, 7-8; All-school Play, 8; Nampa, Idaho.







#### THOMPSON, HOWARD

A.B. Business Administration  
Lambda Sigma Pi; Intramural Sports,  
2-3-4-5-6-7-8; Manager, Varsity Bas-  
ketball, 3-4; Vice-President, L. S. P.,  
7-8; South Dakota.

#### TOLBERT, ROBERT

A.B. Sociology  
Sigma Lambda Alpha; Breckenridge,  
Minnesota.

#### YEEND, HELEN

A.B. English  
Sigma Lambda Alpha; Whitman Col-  
lege, Walla Walla, Washington, 5-6;  
Associate Editor, Crusader, 7-8;  
Walla Walla, Washington.

#### SIEFARTH, DONNA

A.B. Sociology  
Alpha Delta Phi; Ass't Bus. Mgr.,  
Crusader, 3-4; University of Idaho, 5;  
Treasurer, Senior Class, 7; Reporter,  
Crusader, 3-4; Nampa, Idaho.

#### SPENCER, MARGUERITE

A.B. Philosophy  
Olympian; Ass't Editor, Crusader, 1-2;  
Secretary, Oly, 1; Varsity Debate, 1-2-  
3-4-5-6-7-8; Vice-President, Speech  
Club, 1; Declamation Manager,  
Speech Club, 5-6; Debate Manager,  
Speech Club, 7-8; Who's Who, 5-6-  
7-8; Program Chairman, Oly, 5-7;  
Donnell J. Smith Debate Trophy, 1-2;  
Editor, Crusader, 3-4; Literary Edi-  
tor, Oasis, 1-2; Zeta Kappa Rho, 2;  
Treasurer, Philosophy Club; Secretary,  
Athletic Literary Council, 7; Manag-  
ing Editor, Campus Codes, 4; Nampa,  
Idaho.

#### SPURBECK, AUDREY

A.B. Art  
Alpha Delta Phi; Zeta Kappa Rho,  
5-6-7-8; F. T. A., 5-6-7-8; Assistant  
Art Instructor, 3-4-5-6-7-8; Pomeroy,  
Washington.

#### SULLIVAN, ALFRED

A.B. Speech  
Bethany Peniel College, Th.B.; Lamb-  
da Sigma Pi; President, L. S. P., 7;  
President, Senior Class, 7-8; Dra-  
matics, 6-7-8; Varsity Basketball, 6-7-  
8; N Club, 6-7-8; Bethany, Oklahoma.

#### SULLIVAN, DAVID

A.B. Philosophy  
Alpha Delta Phi; Reporter, Crusader,  
1-2; Program Chairman, A. D. P., 2-3,  
Play, 4, Cheer Leader, 7; President,  
Philosophy Club, 7-8; Treasurer, Men's  
Club, 1-2; Messiah Soloist, 3-5-7;  
Zeta Kappa Rho, 3-4-5-6; A Cappella,  
1-2-3-4-7-8; Art Director, Oasis, 1-2;  
Council Bluffs, Iowa.

#### TAVES, VERONA

A.B. Home Economics  
Alpha Delta Phi; Secretary, A. D. P.,  
5-7; Treasurer, Sophomore Class, 3-4;  
Reporter, Crusader, 3-4-5-6-7-8; Ath-  
letic Literary Council, 5-7; Philhar-  
monic, 1-3; President, Home Ec. Club,  
3-4-5-6; President, A. W. S., 7-8; Stu-  
dent Council, 7-8; Who's Who, 7-8;  
F. T. A., 5-6-7-8; Spencerian Speech  
Club, 1-2; Casselton, North Dakota.

#### ZINK, LAURA

A.B. Sociology  
Olympian; Bemidji State Teachers  
College, Bemidji, Minnesota; Chris-  
tian Workers' Band; Northome, Minn.

#### ZINK, HOWARD

A.B. Mathematics  
Lambda Sigma Pi; Athletic Director,  
L. S. P., 5; Christian Workers' Band;  
Foreign Mission Band; Durango,  
Colorado.





---

*Juniors*





Proud of being upperclassmen...in the process of maturing...mingled moods of fun and gravity...earnest...many irons in the fire...burners of midnight oil...hearty...beginning to think seriously about careers...touch of sophistication...varied interests, united aim...optimistic in spite of adverse circumstances...confidence in the future through trust in God.

DON PETERMAN  
President



Allen, Carrol  
 Bellamy, Maisie  
 Bennett, Allen  
 Berkley, Clarence



Bevens, Lonnie  
 Bozarth, Beulah  
 Buchanan, Sydney  
 Burkey, Emery



Butler, William  
 Clark, Charlotte  
 Cox, Raymond  
 Cozad, Donald



Edes, Betty Jean

Edgar, Ervin

Cramer, Ruth

Dilley, Lorraine





Evans, Elizabeth

Fowler, Millicent

Franklin, Warren

Galloway, Virginia



Gardner, Edna  
Gardner, Juanita  
Gwynn, Arthur  
Harris, Carol

Heliwell, Gordon  
Hill, Gladys  
Hilty, Virginia  
Kincaid, Grace

Kirley, Virginia  
Kitson, Dorothy  
Klinner, Victor  
Klundt, Rudie

Lancaster, Rosalee  
 Laughlin, Esther  
 Lawrence, Olive  
 Litsey, Harold



Miller, Luceal  
 Moss, Maxine  
 Mylander, Helen  
 Nelson, Naomi



Nyberg, David  
 Paul, Evangeline  
 Perry, Catherine  
 Pershall, Roscoe



Peterman, Don  
 Peterman, Ruth  
 Peterson, Dorothy  
 Reed, Marjorie



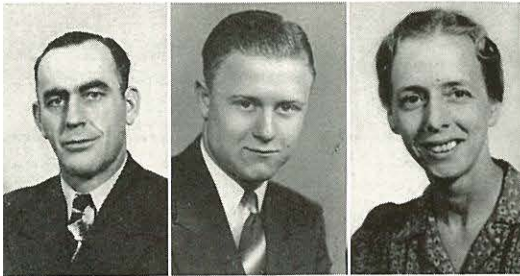
Rickman, Virginia  
 Robertson, Cecil  
 Rodman, Doris  
 Roseboro, Wallace



# *Juniors*



# *Juniors*



Shoemaker, Fred  
Siefarth, Ernest  
Slemmer, Leta



Smith, Audrey  
Smith, Elwood  
Sporleder, Bob



Sprenger, Bertha  
Squires, Norma Lee  
Stanton, Rex



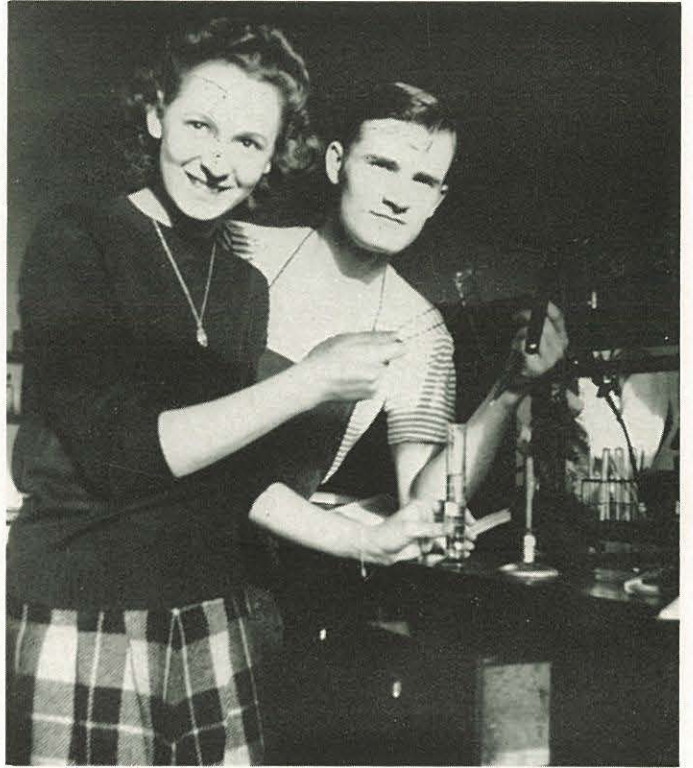
Steffan, Sarah  
Steward, Mahlon  
Stratton, Nellie

Tame, Elwood

Thiessen, Emma

Wilkes, Margaret





---

*Sophomores*





Furtwangler, Conway  
 Gardner, Maxine  
 Gause, Frances  
 Gray, Richard  
 Harper, Mary

Harryman, Nellie  
 Hawk, Naomi  
 Hayes, Myrtle  
 Hempel, Dean  
 Henderson, Ralph

Herron, Margie

Hobson, George

Hoidal, Edith

Jennings, Wanneta

Kembel, Molly

Kelley, Curtis

Kern, Claire

Kern, Elaine

Lang, Pauline

Lindsey, Eula Mae

# Sophomores

Litsey, Roy

Lorbeér, Margaret

Manley, Dorothy

Manley, Robert

McKenzie, Eva

Messenger, David

Michel, Joyce

Miller, Ruth

Newton, Maryellen

Nutt, Lillian

Paulson, Ralph

Pershall, Alice

Peterson, Catherine

Peterson, Mary

Pyrtle, Christle





# Sophomores



Ranum, James

Ray, Delma

Rogers, Marcella

Satter, Elvira

Shafer, Dorothy

Smith, Wesley

Sporleder, Corleen

Spry, Margaret

Stanfield, Geneva

Sunden, Grace

Sutherland, Margaret

Tracy, Joe

Walker, Willis

Waller, Thelma

Walton, Myrtlebell

Webb, Olive

Wesche, Mary

Zimbelman, Leah

Zimmerman, Howard



---

*F r e s h m e n*



Biggest class yet . . . versatile talents . . . the nostalgia and hearty fun of "School Days" . . . many of the "eligibles" back home from Army and Navy . . . pursuing the "accelerated program" with enthusiasm and ambition . . . notable for its pretty girls . . . collegiate . . . pranksters . . . genuine Christians.



JERALD JOHNSON



*Freshmen*

derson, Doris

Angel, Ruth

Arneson, Esther

Bailey, Ruth

Barber, Rose Marie



Barker, Rutheda

Bassett, Betty

Battin, Mary

Baustian, Sydney

Beukelman, Delmar

Briggs, Aletha

Bowen, Bertha

Bozarth, Donald

Bradley, JoAnne

Bridge, Helen

Bruner, Keith

Burkhart, Joanne

Byron, Lloyd

Campbell, Hattie

Carpenter, Clare

Carpenter, Dolores

Cherrington, Donald

Cockerham, Esther

Conaway, Ralph

Conner, Betty Jean





Cooke, Carol  
 Craig, Oneida  
 Crisp, Joan  
 Crofford, Juanita  
 Curtis, Elmer



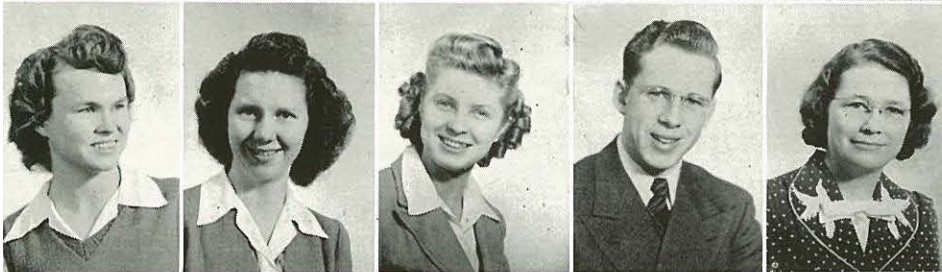
Daly, Marion  
 Davis, Patricia  
 Day, Evelyn  
 DeVries, Emma Jeanne  
 Dick, Ruth



Durrand, Jeanne  
 Eckert, Arleigh  
 Edgar, Hazel  
 Edwards, Harrold  
 Emerson, Fairy



Faul, Betty  
 Feltar, Ruby  
 Fisher, Alden  
 Fischer, Ruth  
 Foote, Martha



oster, Sandy

Ganoung, Betty

Gardner, Lois

Gebhardt, Lloyd

Gould, Dorothy



Haile, Shirley

Hammer, Edwin

Hansford, George

Harden, Marjorie

Harman, Eunice



Harding, Bette  
Harris, Lewis  
Harrison, Anita  
Haskins, Kathryn  
Hawks, Ulala



Heberlein, Marcella  
Heiserman, Frances  
Heliwell, Kathryn  
Herron, Edith  
Herron, Ruth

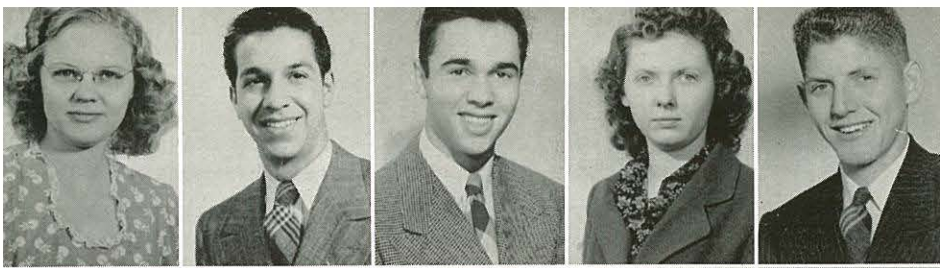


Herzog, Esther  
Hill, Delpha  
Hill, Doris  
Hull, Ralph  
Hutchings, Virginia



Jenkins, Elaine  
Jensen, Faye  
Jensen, Gladys  
Johnson, Edwin  
Johnson, Jerald

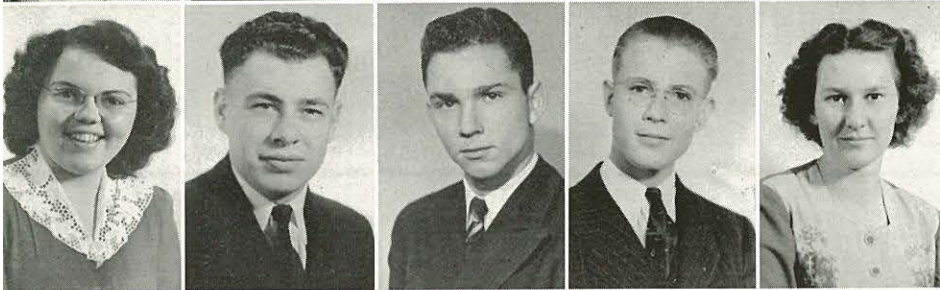




Johnson, Marian  
Johnson, Wayne  
Johnson, Wesley  
Kiel, Donna  
Kiel, Robert



Kincaid, Olive  
Klinner, Eleanor  
Lancaster, Floyd  
Laughlin, Claraee  
Lee, Connie



Lintz, Eunice  
Long, Wendell  
Ludlow, Glen  
Lutz, Harlan  
Manley, Earlene



McCoy, Clyde  
Merk, Alma  
Midby, Harry  
Miller, Patsy  
Miller, Robert



Mills, Esther

Mulligan, James

Newell, Nona Faye

Owen, Mary

Peterson, Clarence



lips, Maxine

Pinkston, Pearl

Potter, Kenneth

Rambo, Helen

Rennick, Merle



Richards, Frank  
Robbs, Jeanette  
Roberts, Audry  
Roseboro, Stanley  
Rothenberger, Eleanor



Ruby, Beatrice  
Rutledge, Ruth  
Schmidt, Betty  
Scholten, Lois  
Shoemaker, Gwendolyn



Shoemaker, Ralph  
Sievers, Harriett  
Simmons, Leslie  
Smith, Delight  
Smith, Geneva



Smith, Mary Ellen  
Snyder, Eldon  
Sodorff, Betty  
Sorenson, Loretta  
Speer, Russell





Spencer, Margaret  
Stanton, Juanita  
Stevens, Evelyn  
Stratton, Twila  
Sturtevant, Lucy



Surerus, Viola  
Tait, Lexie  
Taylor, Geraldine  
Theiss, Lorraine  
Thomale, Dora



Timmreck, Betty  
Timmreck, Keith  
Tolson, Ward  
Walker, Carolyn  
Walker, Marcia



Wallace, Loree  
Waller, Carrol  
Webber, Frances  
Wheeler, Wilbur  
Wibbels, Sarah



Wilde, Carl

Wilde, Pauline

Williamson, Donald

Wilson, Dale

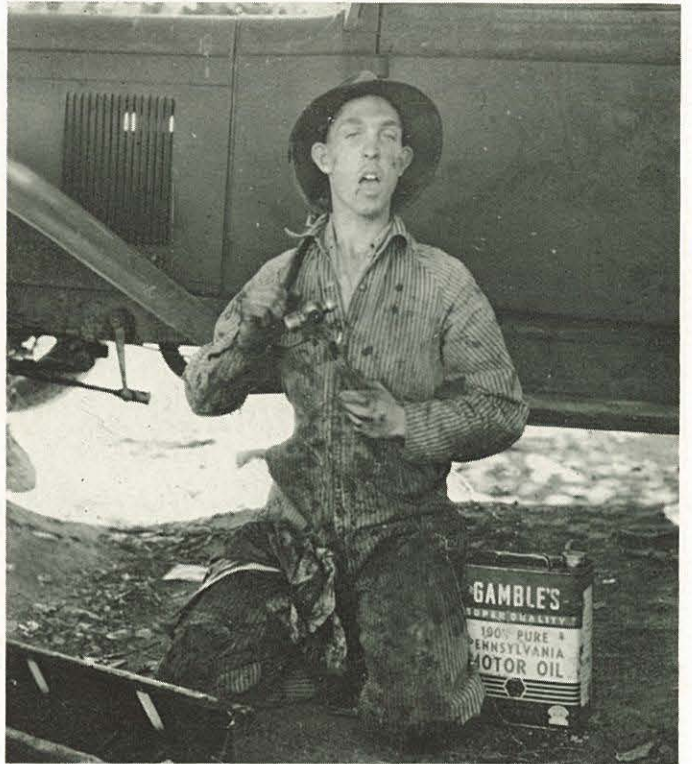
Wordsworth, Paul

NOT PICTURED

Newell, Gale

Porter, Clyde

Vail, Elmore

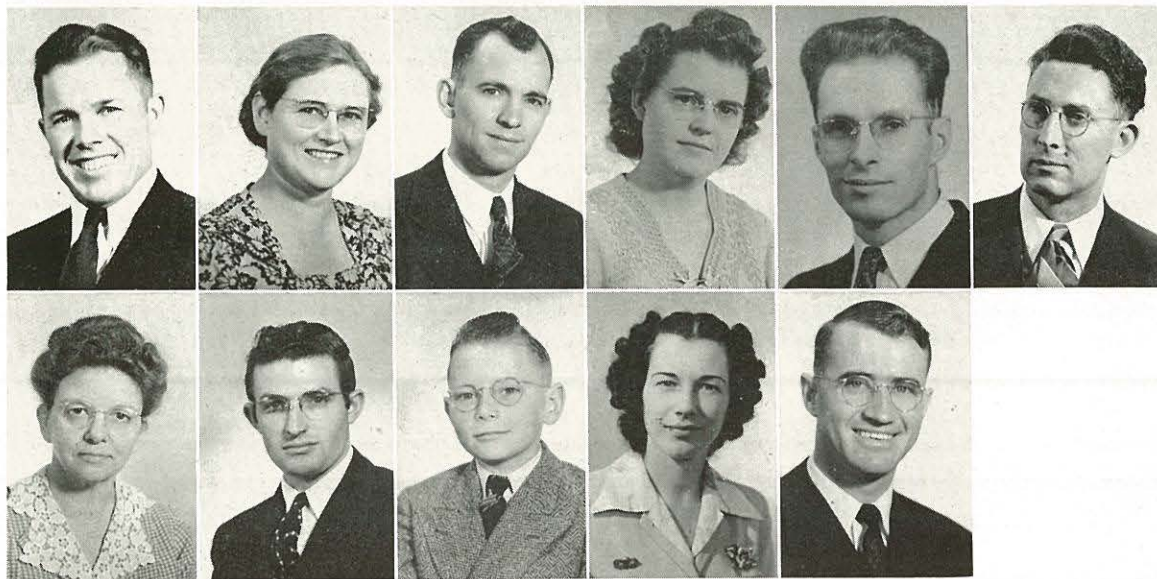


---

*Specials and Grads*



# *Specials and Graduates*



Burton, Loren

Burton, Myrtle

Craker, Donald

Heimbach, Mabel

Hutchinson, Darrold

Rogers, Harold

Schnasse, Irene

Smythe, Orville

Solts, John

Vawter, Esther

York, Leonard

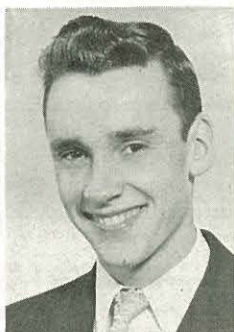


---

*Academy*



# Seniors



Bates, LeRoy



Cramer, Doryce



Day, Louise



Frisk, Joy



Gregg, Marjorie



Hines, Darlene



Likens, Faye



Manley, Doris



Nelson, Gene



Rapp, Carole

# Seniors



Robinson, Lois

Stathopulos, Faye



Stratton, Barbara

Surerus, Eunice



Thompson, Harold

Tock, June



Zimmerman, Charlotte

## NOT PICTURED

Everist, Joan

Schober, Lois

Scott, Rosella



# *Juniors*



Alley, Loraine

Armstrong, Gilbert

Bauguess, Genevieve



Brink, Pearl

Butcher, Ed

Cockerham, Rachel



Davis, Amy

Dockter, Irvin

Duncan, Darlyne



Edgington, Mary

Emerson, Earl

Estabrook, Carol



Friesen, Dave

Jennings, Roy

Johnson, Clarice



Jones, Reva Nell

Manley, Mary

Markus, Betty

McCorkle, John

Mobley, Geneva

Morgan, Wilbur



Painter, Bud

Robberson, Louise

Russell, Ambie



Sharp, Carol

Shute, Eloise

Smith, Afton



Sutton, Gerald

Taylor, Naomi

Trovillion, Nadine



Vail, Lois

Webb, Verna

Ward, Muriel



Weber, Lois

Williams, Betty

Young, Alfred



NOT PICTURED

Darrow, Richard

# *Juniors*





Bauerle, David

Bennett, Laura

Bishop, Lilly Ann

Bowman, Ercil

Cameron, Jessie

Davis, Dorothy

Finkbeiner, Arnold

Hector, Gilbert

Hines, Dwayne

Johnstone, Ethel

Laughlin, Edward

Laughlin, Owen

Peppley, Dolores

Peterson, Bethel

Peterson, Freda

Pinkston, Reta

Pullen, Lyndol

Shoemaker, Marvin

Sutherland, Paul

Vulk, Ocie

Webb, Juanita

# *Sophomores*

# Freshmen



Blackwell, Charlotte  
 Breakey, Lois  
 Canady, Rae  
 Cherrington, Del  
 Chittenden, Lela

Conrey, Jean  
 Duncan, LuVerne  
 Hawkins, Anita  
 Hector, Nathalia  
 Howison, Barbara

Laughlin, James  
 Manley, Wilma  
 Maxwell, Donna  
 Miller, Marilyn  
 Painter, Dan

Palmer, Jackie  
 Peterson, Harlan  
 Rorex, Maxine  
 Rothenberger, M.  
 Russell, Mary

Solts, Lura  
 Smith, Nina  
 Smith, Norma  
 Sturtevant, Iva  
 Tock, Gladys

Trovillion, Delois  
 Walker, Ivan  
 Wells, Chester



# Alpha Delta Phi

## 1st Semester

Jerald Johnson.....	President.....	Warren Franklin
Eileen Jensen.....	Program Chairman.....	Doris Rodman
Merle Bozarth.....	Vice-President.....	David Messenger
Verona Taves.....	Secretary.....	Ardeth Grover
Neva Newell.....	Treasurer.....	Alden Fisher
Joyce Kincaid.....	Athletic Director.....	Olive Kincaid
Rudy Klundt.....	Athletic Director.....	Don Peterman
Harold Daniels.....	Chaplain.....	Merle Bozarth
Amy Davis.....	Cheer Leader.....	Chuck Zimmerman
David Sullivan.....	Cheer Leader.....	Harold Gretzinger
Professor Ray.....	Sponsor.....	Professor Ray
Charlotte Edgar.....	Sponsor.....	Helen Wilson

## 2nd Semester







More and more we are coming to realize that the greatest honor N. N. C. can confer upon an individual is to make him an A. D. P.

We are proud of the enviable records which our society has established in the various activities, but we are out to arise, with grim determination; declare with our might; and possess still more of the laurels which are offered to the victors.



# Lambda Sigma Pi

1st Semester		2nd Semester
Al Sullivan.....	President.....	Elwood Smith
Bethel Fritch.....	Program Chairman.....	Dolores Bone
Howard Thompson.....	Vice-President.....	Kenneth Potter
Marjory Reed.....	Secretary.....	Jeanne Durrand
Dolores Bone.....	Treasurer.....	Pauline Lang
Mary Harper.....	Athletic Director.....	Elaine Jenkins
Claire Kern.....	Athletic Director.....	Elmore Vail
Ralph Paulson.....	Chaplain.....	Ralph Paulson
Harry Midby.....	Sergeant-at-Arms.....	Harry Midby
Lois Scholten.....	Cheer Leader.....	Lois Webber
Rose Bates.....	Cheer Leader.....	Freida Peterson
Elaine Jenkins.....	Cheer Leader.....	
Helen Wilson.....	Sponsor.....	Ethel Allison
	Sponsor.....	Geneva Mumau







Co-operation and organization were the keynotes for our society. Acknowledging the challenge of the older societies, the members have set to work with a will.

Active participation in each of the events showed that their acceptance of the challenge was no idle threat. Nor have we failed in our activities to keep our school motto in mind—that of seeking first the Kingdom of God.



# Sigma Lambda Alpha

1st Semester	2nd Semester
Bob Sporleder.....	Dean Hempel
Dorothy Peterson.....	Geneva Stanfield
Howard Zimmerman.....	Lowell Blum
Helen Yeend.....	Dorothy Peterson
Lowell Blum.....	George Hansford
Elaine Kern.....	Lorraine Alley
Don Dale.....	Don Dale
Roy Litsey.....	Jimmy Ranum
Evelyn Day.....	Evelyn Day
Bette Harding.....	Bette Harding
Wesley Johnson.....	Bob Sporleder
Professor Tillotson.....	Charlotte Edgar
Miss Mumau.....	Sponsor







The type of society we have is revealed in our name, Sigma Lambda Alpha—Greek letters that mean to us, Success, Leadership, and Aggression.

Although we have not always been victorious, we have always put forth our best efforts. Success is ours, for we feel that "it is better to have tried and failed than never to have tried at all.



# *Associated Women Students*



Striving to create a friendly and cheerful atmosphere about the campus, and graciously rising to each occasion, the A. W. S. endeavored to take a place of service throughout the year in the social life of N. N. C.

Under the leadership of versatile Verona Taves, new girls were adopted by "big sisters," who helped them get acquainted with our college. February brought Heart Sister Week, with good fairy "heart sisters" mysteriously doing favors for one another.



VERONA TAVES  
President

The Men's Club Council acts as a governing board for the Men's Club, which includes all men students of the college. A thorough program giving every man an opportunity to participate in activities was organized by this council.

Various times during the year informal parlor meetings were held for all men students. These meetings were for the purpose of discussing and receiving suggestions on problems of life on the campus.



DON DALE  
President



## *Men's Club*



# *Future Teachers of America*



Future Teachers of America

MARY HARMON  
President



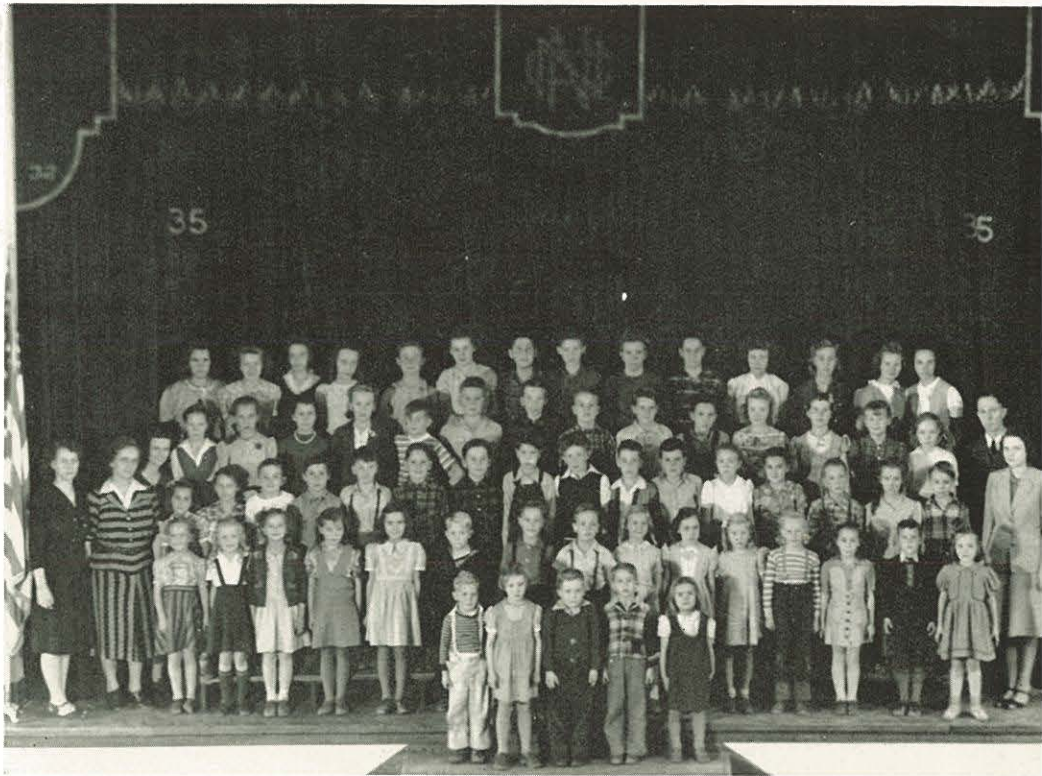
Usually found hobnobbing with a pile of geography, history, and reading books, members of the normal department play an important part in N. N. C.'s student body. Adhering firmly to the axiom that Christian principles plus thorough training equal better education, this group has had a chance to prove its thesis through practice teaching in the grammar school and Academy.

Under the capable instruction of Professor Ethel Allison and Professor Donald Laughlin, the F. T. A. has proved loyal to the tradition of turning out a group of well-trained Christian leaders for future generations of young Americans as well as sponsoring several worth-while projects.



TRAINING SCHOOL

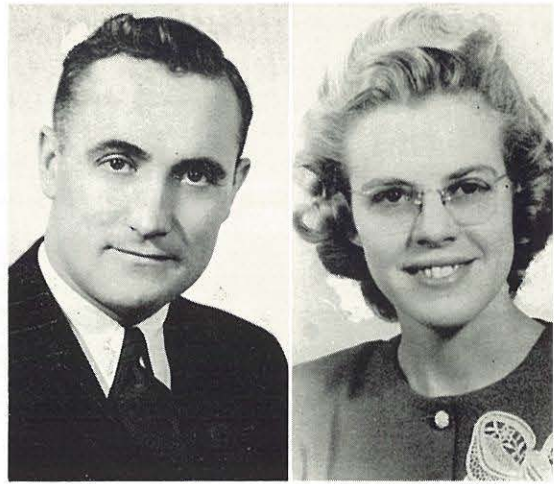
Grammar School Student Body



*Grammar School*



# Art



PROFESSOR A. J. FINKBEINER    MARGARET MJASETH

The Art Department has grown in leaps without bounds during this last year. Students in all departments took an interest in the smelly art laboratory as their primitive nature cropped out to show their love for wrapping up in a gaudy smock, grabbing satisfactory messy material, setting up an easel, and getting smeared.



Time flies as students, garbed in smocks, patiently work for the desired effect in oil and chalk paintings.



ART EXHIBIT

In spite of this inartistic effect upon the students there was an abundance of real talent discovered in a very short time. Work in creative chalk, sculpturing, cartooning, commercial art, painting, and art methods displayed by the students brought praise not only from N. N. C. but from the public as well.

AUDREY SPURBECK  
Student Assistant

PEGGY OLDFIELD  
Student Assistant





# Orchestra

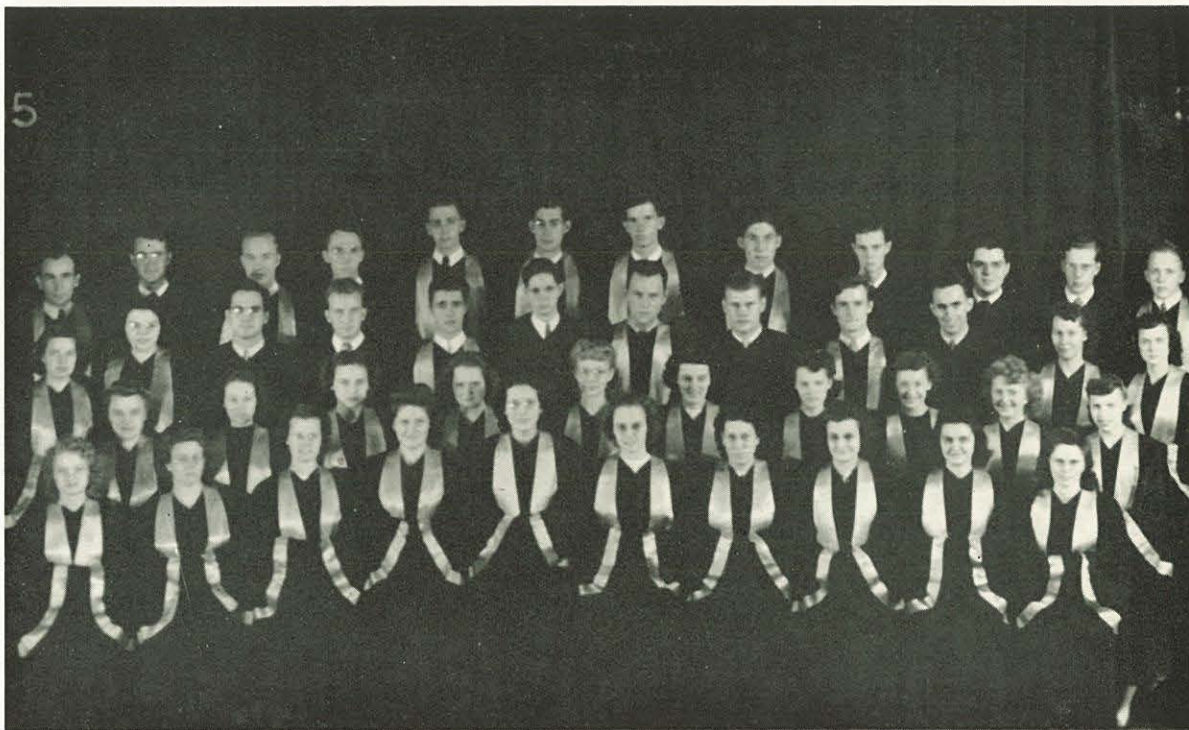


PROFESSOR ALLINE SWANN  
Director

Putting aside assignments for ninety minutes, orchestra members take their instruments twice weekly to the chapel. As they enter, the tuning of strings and brasses produces a symphony of discord. Recreation and the creation of beauty are ultimate aims of this enthusiastic class, as well as valuable musical experience.

The orchestra presented a concert of well known classical music, featuring the famous "Salute to the United Nations."





PROFESSOR ROGER TAYLOR  
Director



Distinctive interpretations of varied types of music have made the A Cappella Choir outstanding in its performances this year. Garbed in their black robes and orange surplices, the group sang for College Church Sunday mornings and presented concerts at several churches on the district. Under the direction of Professor Roger Taylor, an extended trip was made to the Pacific coast where concerts were given in the larger churches in Oregon and Washington.

## *A Cappella Choir*



# *Academy*

Among the various activities of the Academy, Music holds top rank. Under the leadership of Mrs. Carol Gish music organizations and individual musicians have participated frequently in various programs.



Academy Mixed  
Chorus

Academy Girls'  
Glee Club



For the fall and spring revivals, and for church services and chapel programs, the Academy Mixed Chorus and Girls' Glee Club have provided choir numbers and group specials.

From this group a mixed quartet composed of Lyndol Pullen, Carol Sharp, Dorothy Davis, and David Friesen was organized.

*Music*





Philharmonic  
Choral Group

# *Philharmonic Choral Society*

With more than 150 students taking part, the Philharmonic Choral Society thrilled a large audience with its stirring presentation of George Frederick Handel's "The Messiah" in the Central High Auditorium at Christmas time.

Solo parts were taken by Uvonna Bacon, soprano; Eunice Lintz, contralto; Roger Taylor, tenor; and David Sullivan, bass. An annual event at N. N. C., this year's presentation under the direction of Professor Roger Taylor was one of the most outstanding yet presented.

Philharmonic Choral Group  
Orchestra



# *Music Club*



MARJORIE REED  
President

Believing that "music hath charms" for an active N. N. C. life, future Pagannis and Chopins have organized to stimulate an appreciation of good music.

Since the best way of learning to understand music is by listening to it frequently, the Club sponsors Saturday afternoon concerts giving the musicians on the campus a chance to perform.

Knowledge and understanding of philosophy as a basis for a better life—toward this end members of the Philosophy Club, headed by David Sullivan, constantly strive.

With this goal in view they have discussed throughout the year different phases of philosophy. One of the outstanding activities of the club was a dinner at the Dewey Palace Hotel for which Dr. Burch of the College of Idaho was the speaker.



DAVID SULLIVAN  
President

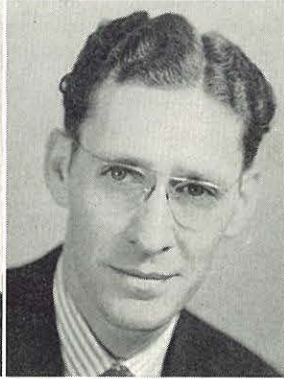
# *Philosophy Club*



# Spence



PROFESSOR M. A. WILSON



ALFRED SULLIVAN

Not by physical feats of valor, but nonetheless effectively, by word of mouth the members of the Spencerian Speech Club gallantly carried forward the crusader banner this year.

Throughout the year, the Spencerians have sponsored the inter-society debate tournaments and declamatory contests. In April they sponsored



Spencerian Speech Club  
Group

# *an Speech Club*



ELVIN ERNEST  
President

an all-school play, "The Trail of the Lonesome Pine," directed by Alfred Sullivan.

Realizing the added expenses of travel due to war-time prices, the club was granted an increased apportionment, which enabled ten speakers to attend the annual Linfield Invitational Debate Tournament at McMinnville, Oregon, where several second and third places were won.



# The Cr



HOWARD ZIMMERMAN  
Editor-in-Chief  
(2nd Semester)



# *Zeta Kappa Rho*



DOROTHY LONG  
President



Zeta Kappa Rho Group

# *Phi Delta Lambda*

Intelligentsia . . . brain trusters . . . Zeta Kappa Rho honor society was organized in 1939 for the purpose of encouraging high scholarship among the undergraduate college students.

Three items are necessary for yearly membership: a student must have been enrolled in school for the full year; he must have been carrying at least twelve hours of college classes; he must have maintained a grade point average of 2.4.

Any student maintaining a grade point of 2.4 for the full four years of college is then eligible to election to Phi Delta Lambda, the national honor society of Nazarene Colleges.



WANDA DAVIS  
Highest ranking Senior, Class of '46



# *Nursing*

Standing a bit apart from the rest of the buildings but still close enough to remain a substantial factor in the life of N. N. C. is the Samaritan Hospital. Here and there about the campus one may see the white uniforms of the nurses as they pass from classes to the hospital or cut across the park to the large three-story building which is the nurses' home.

N. N. C. takes pride in having such an outstanding group of young women taking part in the school activities. Training now to crusade against death, disease, and pain, they will fill a vital need in American life.



SAMARITAN HOSPITAL

Graduates:  
Bachelor of Science  
in Nursing



ARDATH MILLER



VELMA BLICKENSTAFF

Modern equipment, recreational facilities, light and airy classrooms typify the care which is taken of the girls in training in our hospital. Much camaraderie is enjoyed by the nurses in their dining hall where the girls come for their meals when their duties in the wards permit.

Patients, too, appreciate the cozily furnished sick rooms which make them feel at home. Morning dawns for the patient with the sweet and comforting strains of an old familiar hymn sung by the nurses as they come on duty.

NOT PICTURED

Marie Bruner

Hilda Kollin



# College Church



REV. JOHN E. RILEY  
Pastor

The College Church is perhaps the most potent factor in the maintenance of a high level of spirituality in the college. Its twofold purpose is being well realized, for it is adequately providing a church home for the students and is also providing ample opportunity for the exercise of individual talent in religious services. The inspirational singing, the challenging messages, and the definite evangelistic emphasis, have combined to urge all to higher spiritual attainments. Rev. John E. Riley has proved himself to be more than a preacher, for he has been a spiritual father to many who have sought his counsel and advice.

College Church Choir



# *Sunday School*

The Sunday School, led by Professor Tillotson, has averaged over four hundred and fifty this year. The work of the Sunday School has been very effectively linked with the Religious Education department of the college, and many students have actively participated in its various departments.



PROFESSOR D. B. TILLOTSON  
S. S. Superintendent

## *N. Y. P. S.*



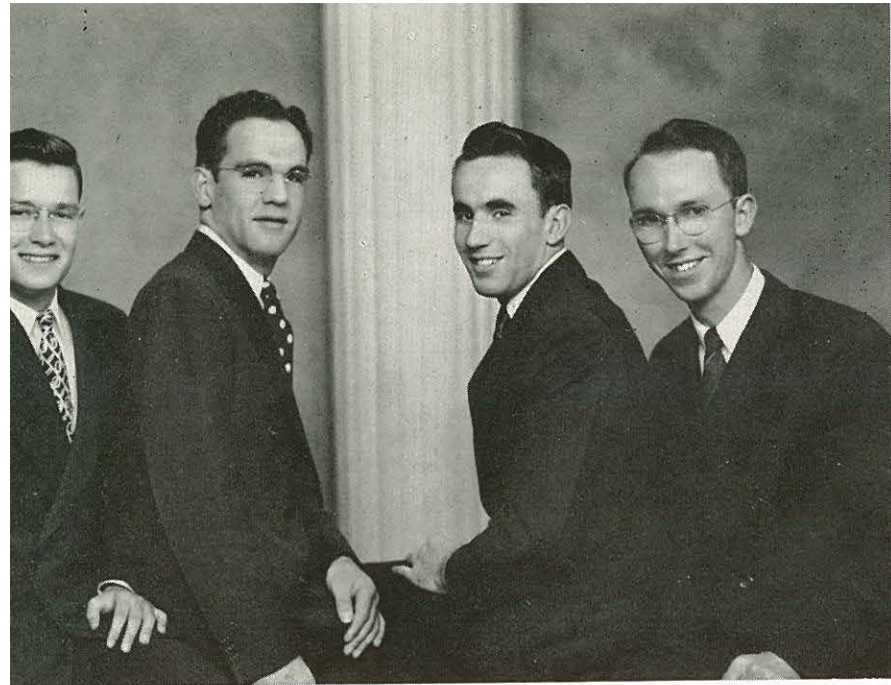
VIRGIL VAIL  
President

All theory and no practice brings stagnation. An ounce of experience is worth a pound of book learning. The soldier learns the formalities of warfare in the training camp, but he makes a poor warrior unless he has faced the grim realities of front-line combat.

These ideas explain the purpose behind the work of the N. Y. P. S., which gives opportunities to Christian workers and puts classroom theory into actual practice.

Virgil Vail has done a commendable job of leading the group and as a result some very effective and interesting programs have been produced.





Kings  
Heralds

Peterson

Blum

Dale

Snyder

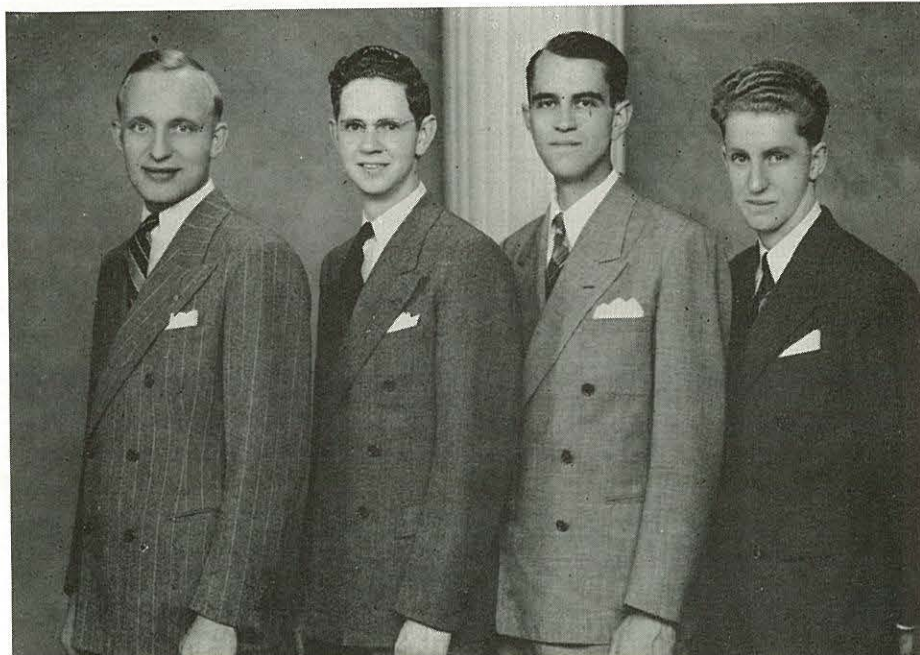
## *Quartettes*

Smith

Daniels

Potter

Dougherty



Kings  
Messengers

Revival fires blazed forth in three conflagrations during the school year, under the leadership of three outstanding preachers: Rev. M. Kimber Moulton, Rev. J. A. McNatt, and Rev. Holland London. These were the human instruments which God used to bring faculty and students alike up to higher planes of Christian experience. Rev. Paul Hill also thrilled our souls with his stirring lectures during the Miller Lecture Series.

The manifestations of God's presence seemed to be felt in abundance this school year.



Moulton

Hill



London



## *Special Services*



# Christian Workers' Band

Christian Workers'  
Band Group



ELVIN ERNEST  
President

Providing an outlet for the talents of young ministers, and satisfying a vital need in Nampa's outlying communities, the Christian Workers' Band has proved to be a real instrument of blessing.

Each Sunday groups including teachers, singers, and ministers visit small churches and outpoints within a radius of twenty miles. This not only affords an opportunity for students, but is a great help to these churches, most of which are too small to employ a full-time pastor.

With the aim of serving humanity, the burden of souls on their hearts, and Christ as their leader, the Christian Workers have faithfully done their part to advance the kingdom.





DONALD PETERMAN  
President

Growth in numbers and in spirit marked the College Missionary Society and the Foreign Mission Band in 1945-46. Headed by Leona Aggola and Donald Peterman, the organizations increased the missionary zeal among the students.

In several challenging programs, held weekly, students told of their calls to foreign and home missions. Returned missionaries spoke to the college under the sponsorship of the society, telling of their life on the mission field and of the power of God to strengthen and keep in the face of heathen disease and superstition.

L. LEONA AGGOLA  
President



## *Missionary Services*





*A t h l e*



*C 8*

BASKETBALL  
PEP BAND  
YELL TEAM  
ACADEMY BASKETBALL  
INTRAMURAL SPORTS  
FOOTBALL  
INTRAMURAL TENNIS  
"N" CLUB

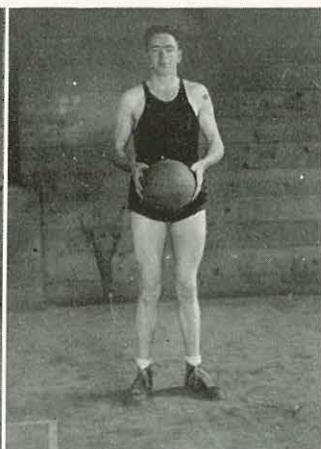




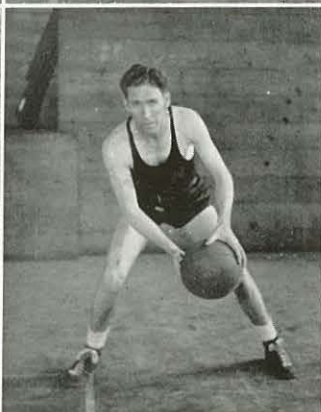
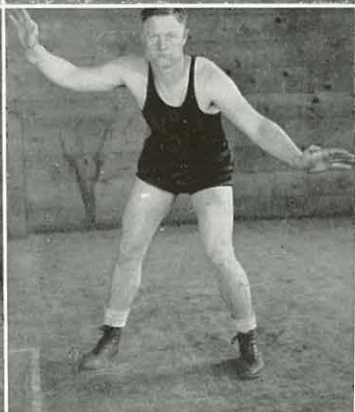
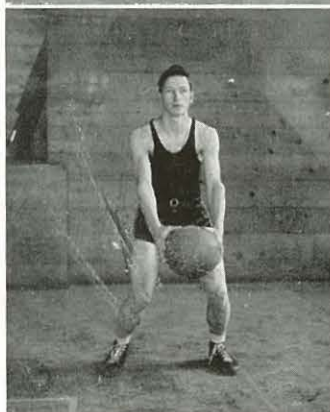
COACH LaMONT LEE

# *Varsity*

Bob Keil  
Elmore Vail  
Orrin Hills



Dean Hempel  
Ernest Siefarth  
Alfred Sullivan

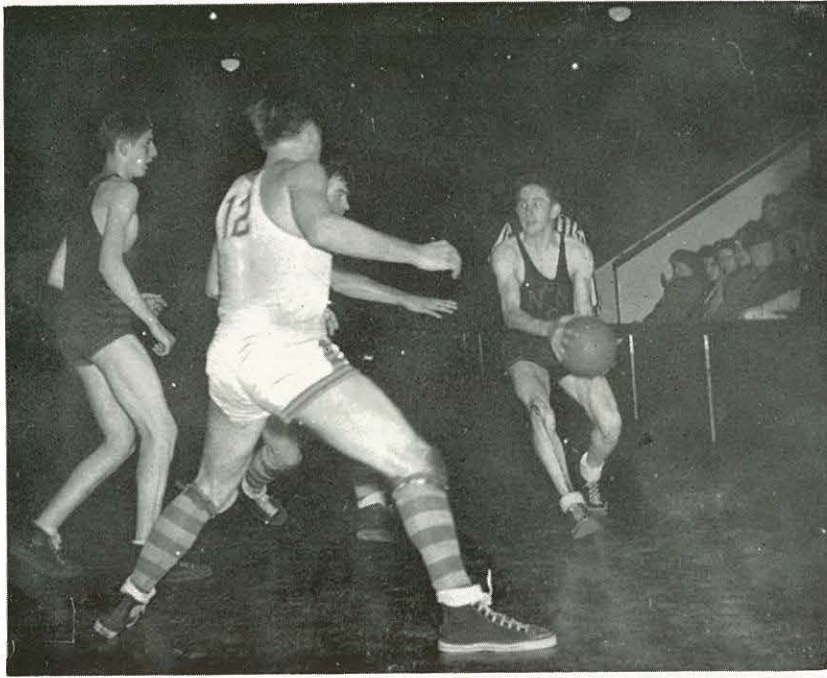




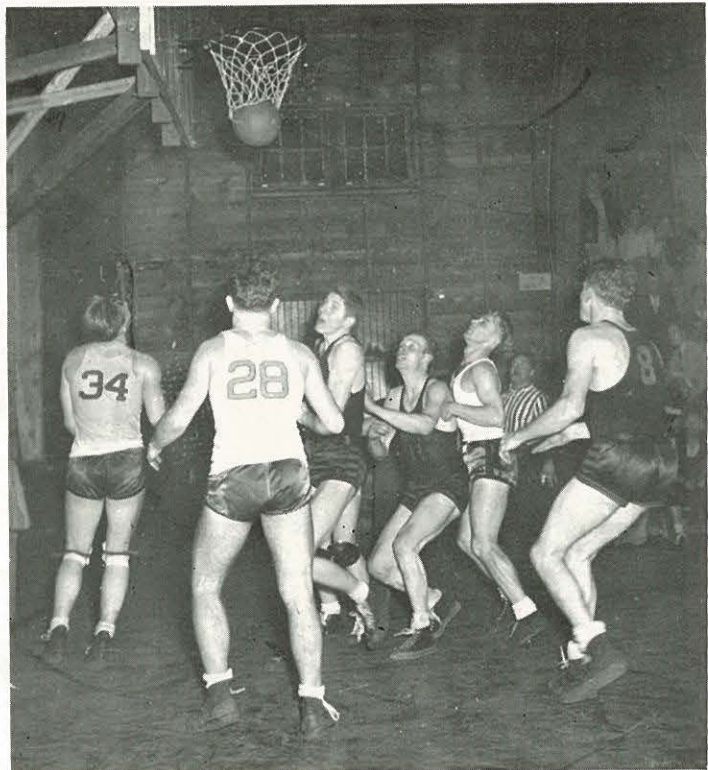
Under the guidance of Coach LaMont Lee, commonly known as "Monty," sports form an integral part of the students' program at Northwest Nazarene College. We are proud of the Crusaders and although we are sometimes disappointed in losing a game, still we have the satisfaction that it was a good clean game. This year, as in the past, the team toured, playing colleges in Oregon and Washington. Perhaps the game all will remember the longest, however, is the game with the "House of David," which left us all laughing for many days to come.

## *Basketball*

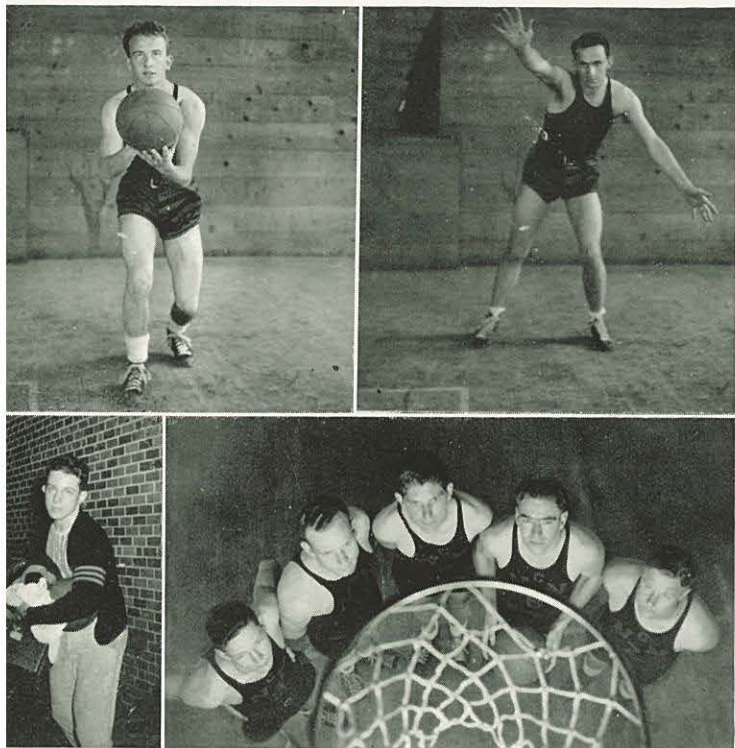




When cold winds and wintry weather finally best even the bravest of N. N. C. athletes, basketball comes to the fore in sports. The college gym is invaded by ball hawks who sink "swishers" from way out and pot difficult corner shots along with the best.



# Basketball



Not all of the action takes place on the floor, for the actual game is child's play compared with the rival exhibitions put on by enthusiastic spectators named Ed Dowd or Willard Midby or any other member of the student body.





*B a*





# e t b a l l

Basketball games—most popular athletic contest on the campus. Our over-craned necks and severely strained vocal cords seemed a small price to pay when we won—and when we lost, the thought of having food down town or at the snack bar helped revive our drooping spirits.

When action began to wane or during a time-out, Bette Harding, Evelyn Day, Wes and Wayne Johnson usually ran out onto the floor like seasoned commandos and urged us to "hit it!"





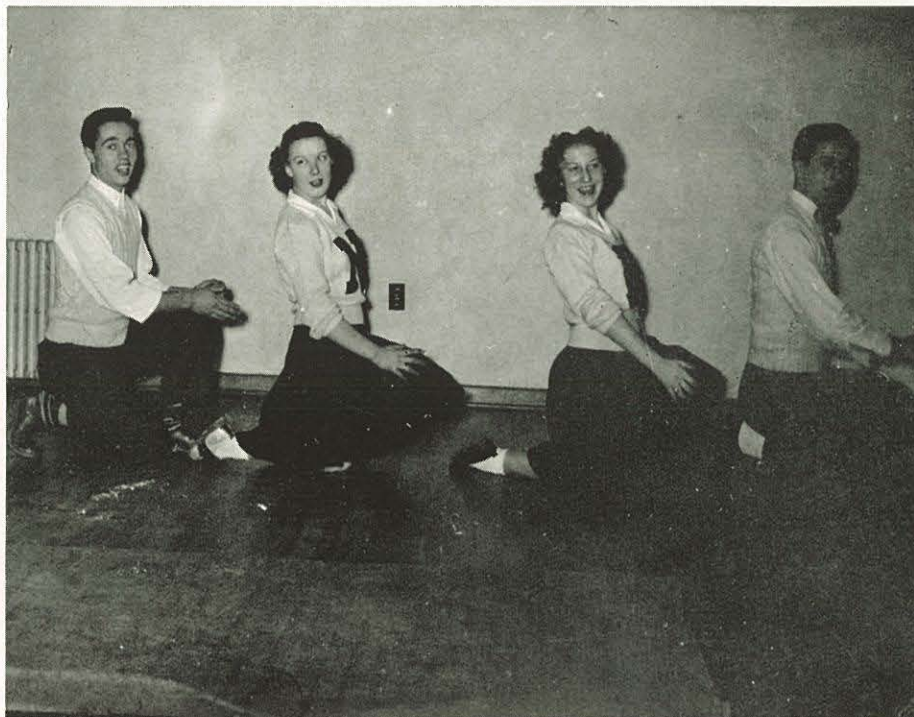


Wes Johnson

Evelyn Day

Bette Harding

Wayne Johnson



"Hit it! C-C-CRU S-S-SAD E-E-ERS Crusaders!" This was the theme yell given over and over this year by our four cheer leaders. This peppy little group composed of vivacious Bette Harding, light-hearted Evelyn Day, strong-voiced Wesley Johnson, and bashful Wayne Johnson did much to raise the morale of the players and make this season's sports a success. Fifteen for the wonderful work and faithfulness of these four!

## *Yell Team*

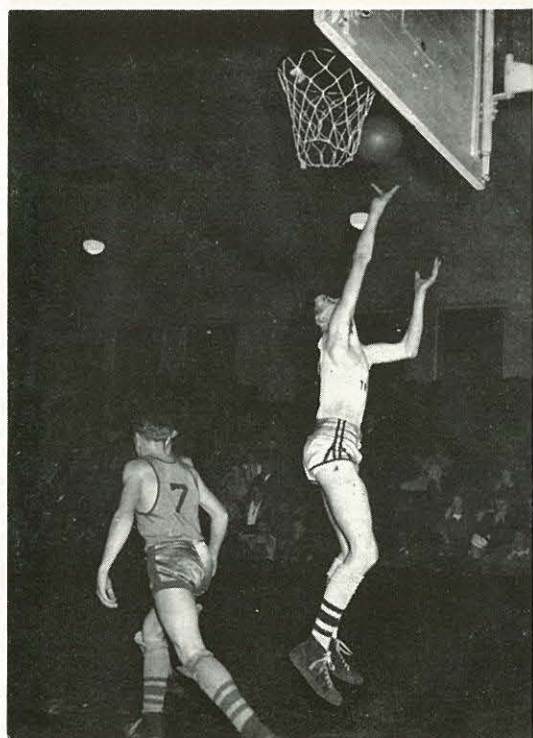
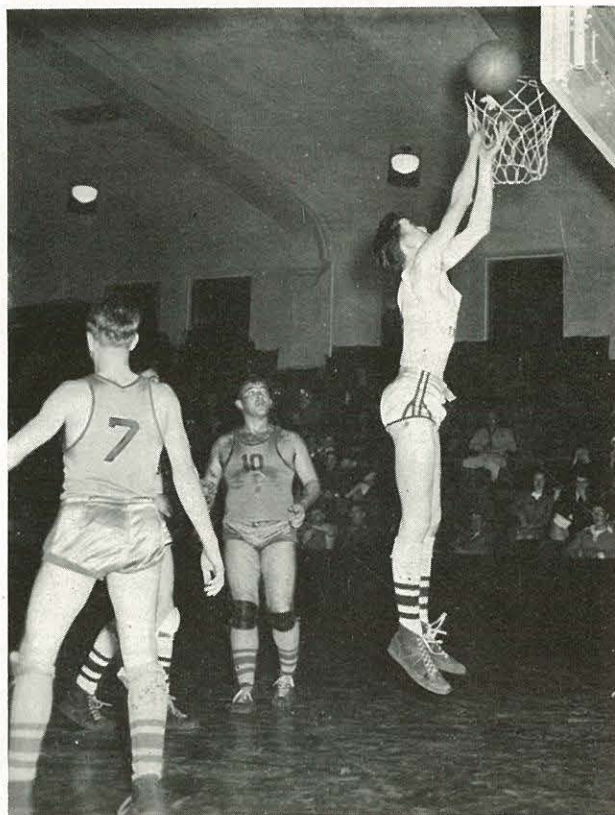




# Academy

Staging a remarkable comeback from the previous season, the Academy basketball team came into its own again this year.

In a schedule which was featured by many close scores, the players fought well, won worthily, and lost graciously in true N. N. C. style. As a pocket edition of the varsity Crusaders, they have upheld ideals as well as played good basketball.





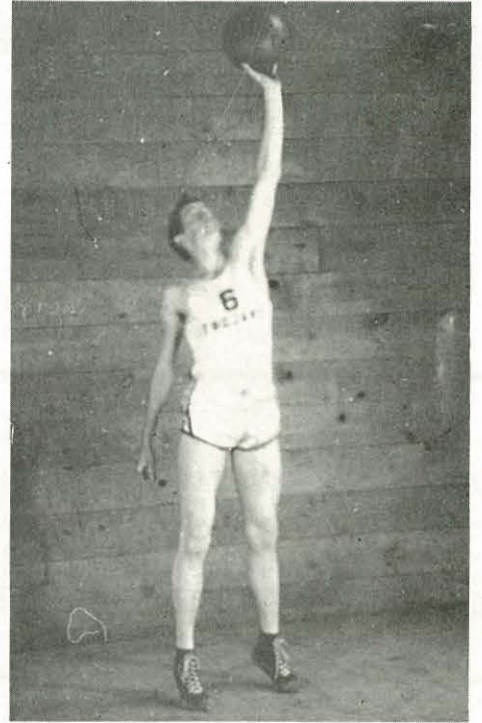
Competition in basketball in the Academy is a vital part of each student's activity. Usually in the preliminary game before a college bout the academy five plays a team from a high school in this vicinity. Competition is keen, demanding the best that can be put into it. Consequently, the games are "thrillers," and from the first blow of the whistle the game is packed with excitement.

## *Basketball*

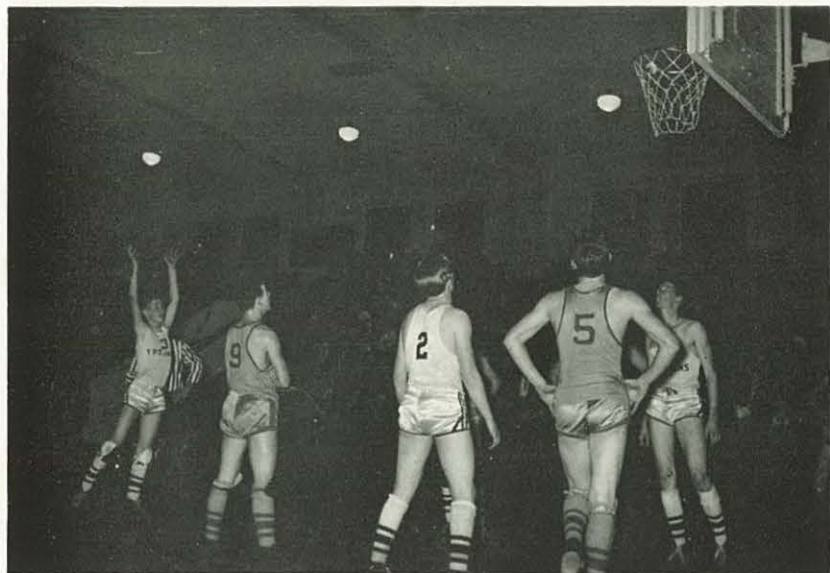


# *Academy*

DAVID FRIESEN  
Captain



Trojans





# *Intra-Mura*



Under the guidance of LaMont Lee and Bob Sporleder, student athletic director, sports form an integral part of the students' program at Northwest Nazarene College. Besides football, basketball, and baseball, there are track, tennis, ping-pong, and golf for everyone. Keen competition keeps enthusiasm high in year-round sports activities.

# *Sports*



After the softball and football season is past basketball comes to the front in intramural athletics. Although varsity players may not participate in intersociety basketball, the games lack none of the fire and clever ball handling seen in varsity games.

## *Basketball*





ALPHA DELTA PHI

Following closely on the heels of softball in the athletic program is touch football. Kurtz Park is again the center of activity with the gridiron there taking the spotlight. Here teamwork at its best is seen in beautifully executed trick play, blocking, passing, and punting.

LAMBDA SIGMA PI



OLYMPIAN



SIGMA LAMBDA ALPHA



ctball



Society competition becomes very keen in some games.





# Baseball





*Softball*





"N"

QUEEN DOLORES BONE

Shirley Haile, Corleen  
Sporleder, Queen Do-  
lores, Twila Stratton,  
Lois Scholten



# Club

DEAN HEMPEL  
President



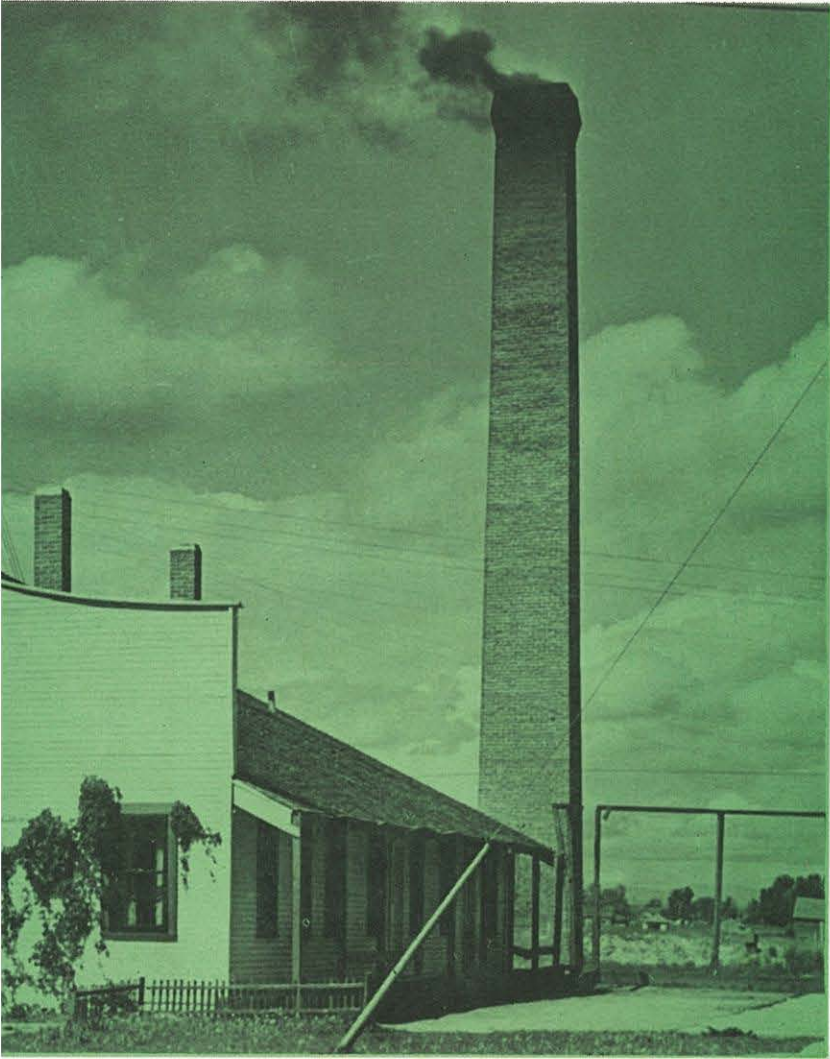
Organized for those students with outstanding athletic ability, sportsmanship, and for Christian character, the "N" Club has been a very active organization on the campus this year. Dean Hempel was chosen president of this group which includes all the lettermen on the campus.

The outstanding activity of the year was the sponsoring of "Tip-Off" night when Queen Dolores Bone and her court were selected as the ideal girl co-eds of the school.





*Featu.*



MUSIC HALL

8

WHO'S WHO  
DAY BY DAY  
ADVERTISING



# Who's Who

Distinction in character, scholarship, leadership, and possibility of future usefulness to business and society determine election to Who's Who.

Northwest Nazarene College is one of the six hundred colleges represented in this directory, Who's Who Among Students in American Universities and Colleges. The book appears annually, is an index and guide for the use of personnel managers. Each year a committee representing faculty members and students nominates upper-classmen from whom eight are selected by the student body. Those chosen have their names included in the volume's current issue. The key which they receive thus signifies the most versatile college achievement.

WANDA DAVIS



EDWARD DOWD

RUTH LONG



DOROTHY LONG

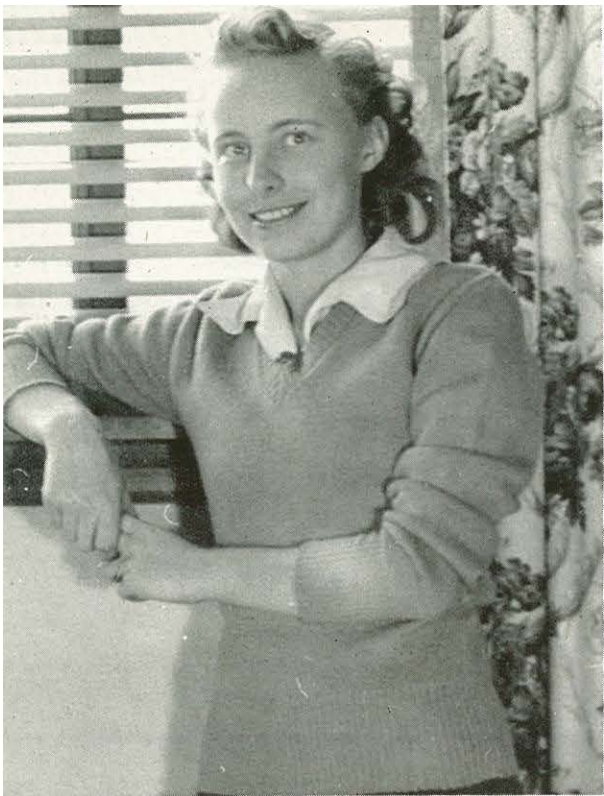


MARY HARMON



WARREN FRANKLIN





PEGGY OLDFIELD



ARDETH GROVER



ORRIN HILLS



DON PETERMAN



DOROTHY PETERSON



MARGUERITE SPENCER



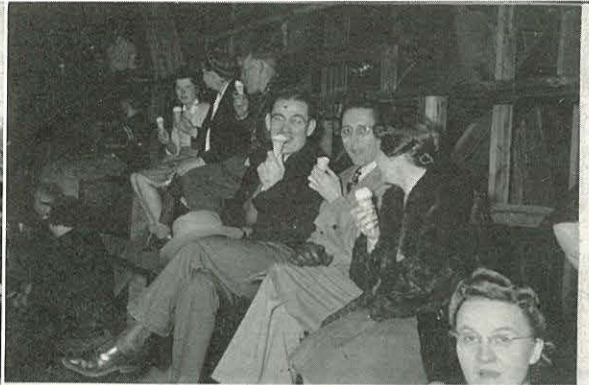
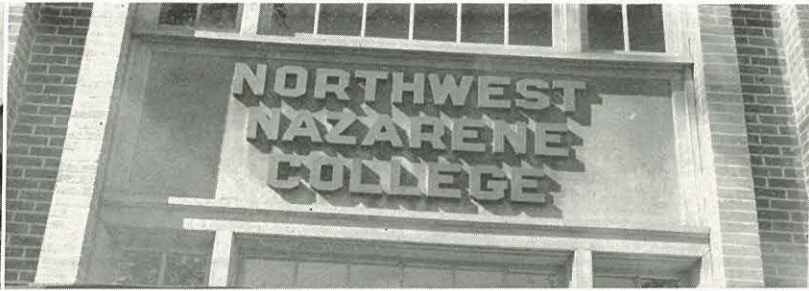
BOB SPORLEDER

VERONA TAVES



# September

Sun	Mon	Tues	Wed	Thurs	Fri	Sat
-----	-----	------	-----	-------	-----	-----





# October

Sun

Mon

Tues

Wed

Thurs

Fri

Sat





# November

Sun	Mon	Tues	Wed	Thurs	Fri	Sat
-----	-----	------	-----	-------	-----	-----





# December

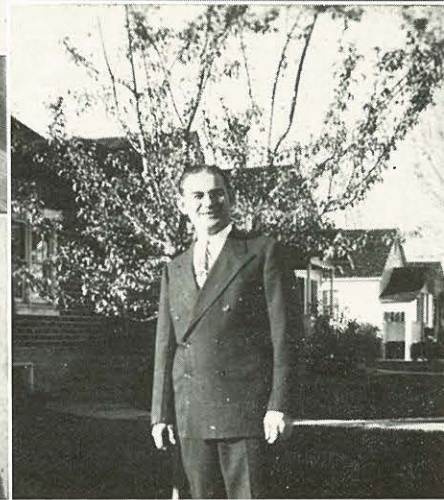
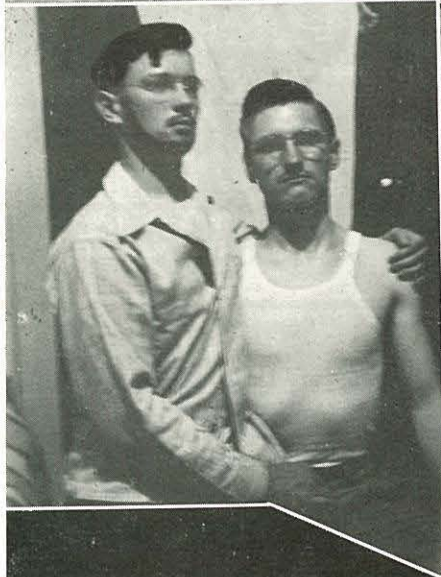
Sun	Mon	Tues	Wed	Thurs	Fri	Sat
-----	-----	------	-----	-------	-----	-----





# January

Sun	Mon	Tues	Wed	Thurs	Fri	Sat
-----	-----	------	-----	-------	-----	-----





# February

Sun

Mon

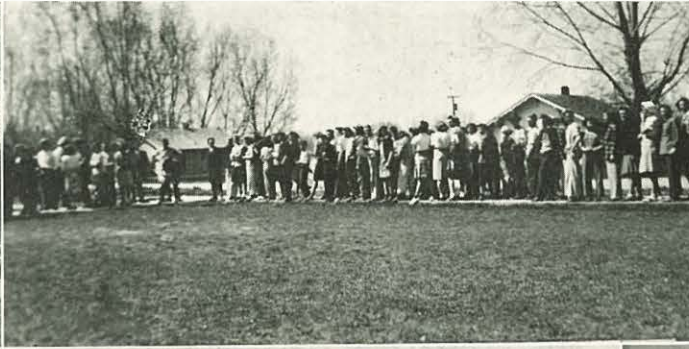
Tues

Wed

Thurs

Fri

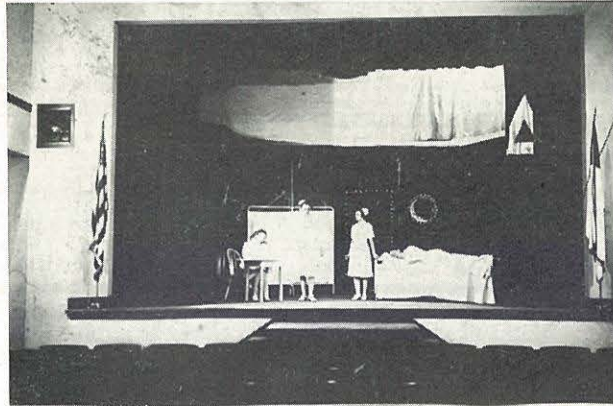
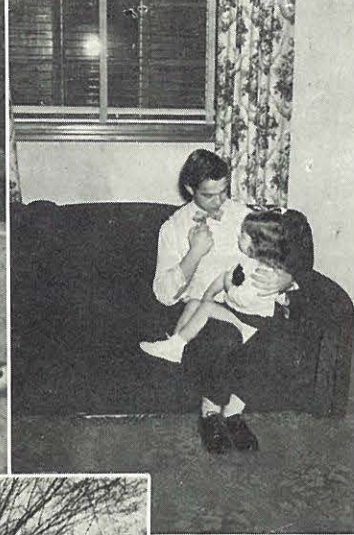
Sat





# March

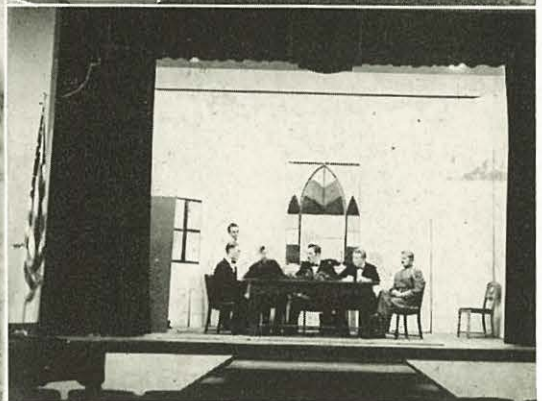
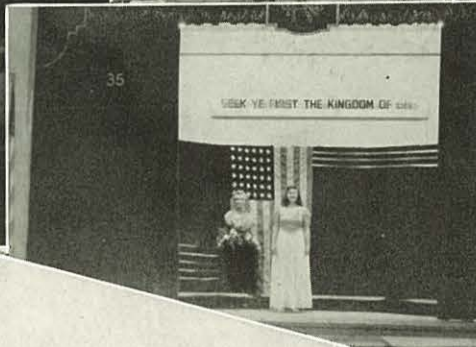
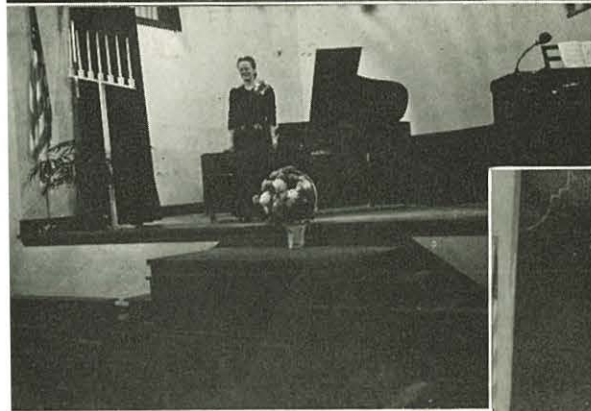
Sun	Mon	Tues	Wed	Thurs	Fri	Sat
-----	-----	------	-----	-------	-----	-----





# April

Sun	Mon	Tues	Wed	Thurs	Fri	Sat
-----	-----	------	-----	-------	-----	-----

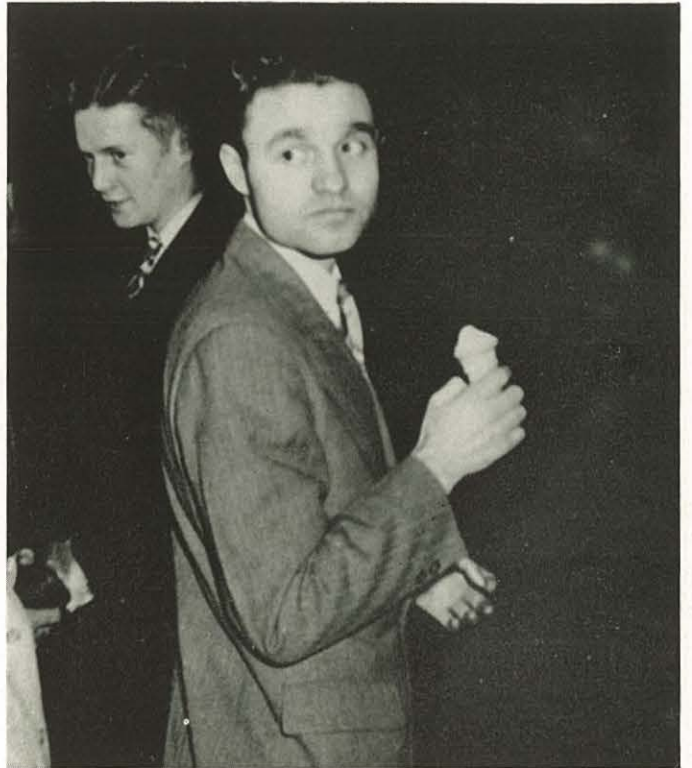




# May

Sun	Mon	Tues	Wed	Thurs	Fri	Sat
-----	-----	------	-----	-------	-----	-----





*Advertising*



# Northwest Nazarene College

Located in Nampa, in the heart of the Boise Valley, in Idaho  
**THE LARGEST DENOMINATIONAL COLLEGE  
IN THE STATE**

A Growing School  
An Efficient Training School  
A Strong Faculty  
A Fully Accredited Institution  
A Wide Variety of College Courses offered  
An Opportunity for pleasant association  
A Well-planned Recreational Program  
Interesting Religious Activities  
Good Spiritual Atmosphere

LEWIS T. CORLETT, PRESIDENT

*A Christian College fully accredited by the Northwest Regional  
Accrediting Association. A member of the Association  
of American Colleges.*



*Congratulations to*  
Northwest Nazarene College  
*from*  
**Idaho-Oregon District**  
Church of the Nazarene



J. A. McNatt

Reverend McNatt    -   -   -   -   -   -   -   -   *District Superintendent*  
Reverend A. Neuschwanger    -   -   -   -   *District N.Y.P.S. President*  
716 Roosevelt Avenue, Nampa, Idaho  
Reverend M. Brown    -   -   -   -   -   -   *Chairman District S. S. Board*  
Mrs. W. A. O. Wilson    -   -   -   -   -   -   *District W.F.M.S. President*

**Young Peoples' Camp and Institute**  
**PAYETTE LAKES, IDAHO**  
**JULY 8-14**



# First Church of the Nazarene

600 15th Ave. St., Nampa, Idaho



A GOOD CHURCH HOME  
A WELCOME TO FRIENDS



Melza H. Brown  
A.B., Th.B., Pastor  
603 15th Ave. So.

## SERVICES

*Radio Broadcast* - - Sun. 8:30 A.M.  
*Sunday School* - - - 9:45 A.M.  
*Morning Worship* - - - 10:45 A.M.  
*N.Y.P.S.-Hi-N.Y.* - - - 7:00 P.M.  
*Juniors and Adult Class Meeting* 8:00 P.M.  
*Evangelistic Service* - - 7:45 P.M.  
*Midweek Service* - - Wed. 7:45 P.M.



George Hansford  
Assistant Pastor  
603 ½ 15th Ave. So.

*"Holiness Becometh Thine House, O Lord, Forever"*



Rev. John E. Riley  
Pastor

## *College Church*

A familiar part of college life on week days, the chapel takes on an atmosphere of solemnity each Wednesday evening and Sunday as the community joins with the students and faculty in worship at the College church.



# North Nampa Church of the Nazarene



Rev. Neuschwanger  
Pastor

Corner of 12th Ave. N. and 3rd St. N.

*Where You May be a Visitor But Not a Stranger*

Rev. Neuschwanger, Pastor  
407 10th Ave. N.

Sunday School	- - - - -	10:00 A.M.
Morning Worship	- - - - -	11:00 A.M.
N.Y.P.S. and Juniors	- - - - -	7:00 P.M.
Evangelistic Service	- - - - -	8:00 P.M.
Prayer Meeting (Wed.)	- - - - -	8:00 P.M.

Rev. Albert Neuschwanger	- - -	Pastor
Harlan Davis	- - -	S. S. Superintendent
Olen Doane	- - -	N. Y. P. S. President
Enid Stone	- - -	W. F. M. S. President

## Kuna Church of the Nazarene KUNA, IDAHO

REVEREND LEO KIRLEY	- - - - -	Pastor
JAMES PERRY	- - - - -	Music Director
LLOYD ALEXANDER	- - -	N. Y. P. S. President
MRS. LEO KIRLEY	- - -	W. F. M. S. President



Leo Kirley

## Homedale Church of the Nazarene

HOMEDALE, IDAHO

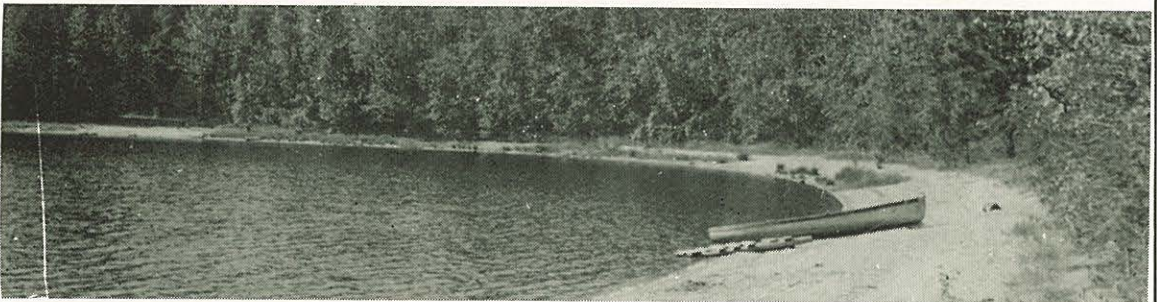
REVEREND CARL MARBLE, PASTOR

*"A Growing Church with a Forward Vision"*

# Northwest District Church of the Nazarene

- NORTHWEST DISTRICT: with its scenery of beautiful mountains, lakes, and forests; with its rolling wheat country and rich agricultural sections; with its many cities: provides almost unlimited opportunity for the Church of the Nazarene.

Young Peoples' Camp and Institute  
Twinlow, Idaho  
July 30—August 4



Future camp site at  
NEWMAN LAKE





# First Church of the Nazarene

Second Street at B  
Yakima, Washington

---

A CHURCH WITH A GREAT VISION  
A CITY WITH A GREAT FUTURE

---

*Loyal to the Doctrines-Institutions  
And Responsibilities of the Whole Church*

---

REVEREND MILO L. ARNOLD, *Pastor*

PARSONAGE ADDRESS  
804 South 16th Avenue

Parsonage Phone—4840

Office Phone—22673





# WALLA WALLA CHURCH OF THE NAZARENE



J. P. Downey, Pastor

*"The most represented  
Nazarene Church at  
N.N.C."*





# First Church of the Nazarene

Nora at Wall

SPOKANE, WASHINGTON

*"I was glad when they said  
Let us go into the house of the Lord."*

A Whole Christ for Our Salvation

A Whole Bible for Our Staff

A Whole Church for Our Fellowship

A Whole World for Our Parish

J. George Taylorson  
Pastor

712 West Nora  
Phone Broadway 1589

# Kennewick Church of the Nazarene

*"The Friendly Church"*

REVEREND JOHN BRIECE	- - - - -	Pastor
MRS. RUDOLPH BAUDER	- - - - -	W. F. M. S. President
MRS. HELEN FARNER	- - - - -	N. Y. P. S. President

# Benedict Church of the Nazarene

BENEDICT, NORTH DAKOTA

*"A Spiritual Church doing the will of the Master"*

REVEREND C. DON RENOLDS—PASTOR

# WASHINGTON-PACIFIC DISTRICT

*Invites You to Its*  
**CAMP MEETING—TEN GLORIOUS DAYS**

— at —  
**BEAUTIFUL HALL'S LAKE**  
(Eight miles north of Seattle)

**Tents—Meals—Accommodations at lowest possible cost**

**AUGUST 2-12**

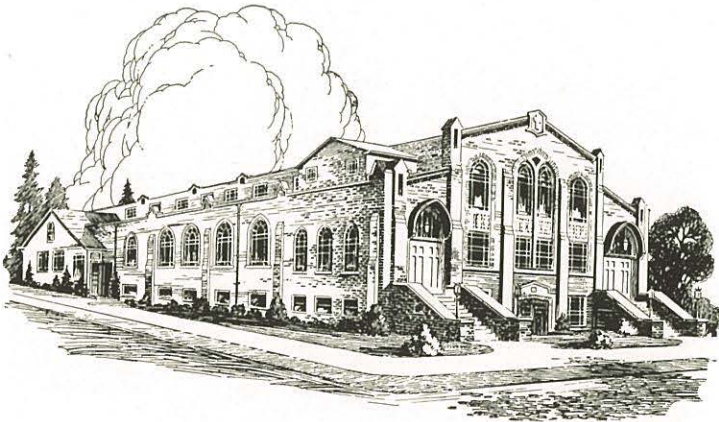
**B. V. Seals**  
District Superintendent

## Central Church of the Nazarene

**Sixth Avenue North and Valley Street**

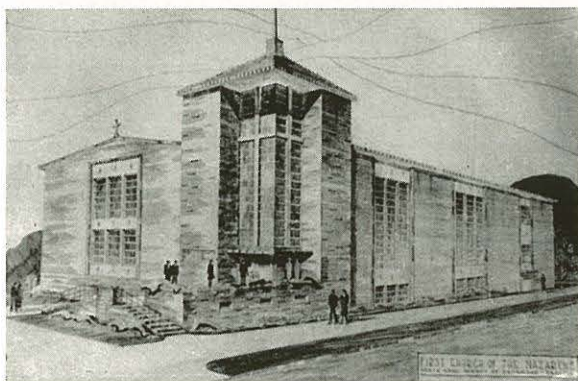
**SEATTLE, WASHINGTON**

*An Evangelistic Church with an Aggressive Program*



**Vernon L. Wilcox,**  
Pastor  
2538 10th Ave. West  
Phone Alder 1487





Building when completed

# First Church of the Nazarene

43rd and Densmore

An aggressive church in a progressive city  
Near the University of Washington  
Consistently true to the old faith

*A live church with a warm welcome*

Reverend Roy J. Yeider, Pastor

Parsonage Address—3648 Burke Avenue

Parsonage Phone—M.E. 2209

Office Phone—M.E. 4560



Rev. Roy J. Yeider

# First Church of the Nazarene

*"The Evangelistic Church"*

Fourth and Alder  
KELSO, WASHINGTON



Pastor  
Palmquist  
701 South Fifth

S. S. Supt.  
Mrs. Peal Dixon

N. Y. P. S. President  
Mrs. Lloyd Parrish

W. F. M. S. President  
Mrs. Emmett Hutchins



Dr. E. E. Martin

## Oregon-Pacific District

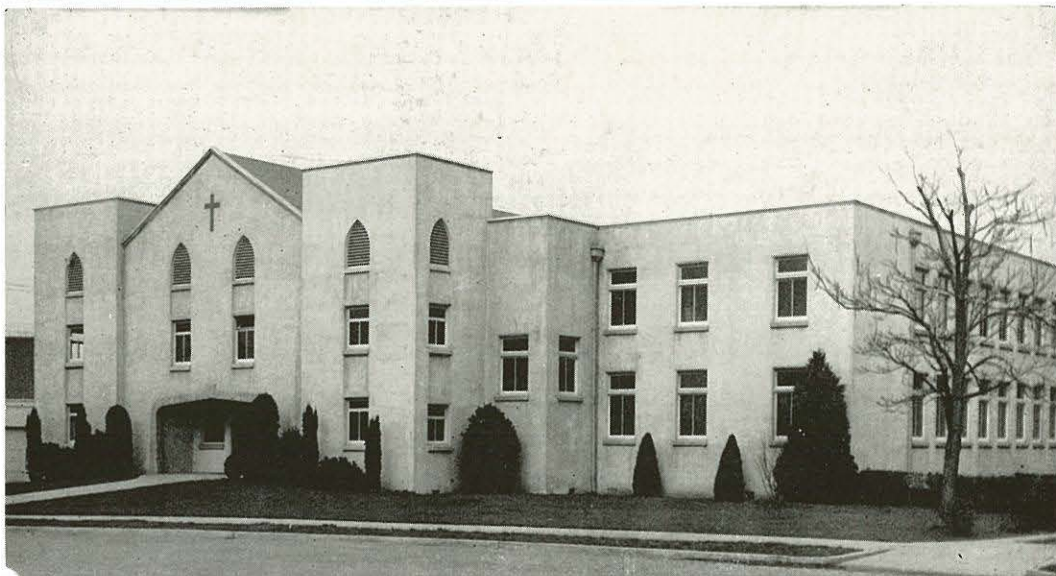
OUR MOTTO:

Go Forward with the West—Make Oregon  
Finer and Better

Progressive Business, Excellent Schools  
Good Churches

*"ALONG THE OREGON TRAIL"*





## MEDFORD CHURCH OF THE NAZARENE



George Coulter  
Pastor  
N.N.C., 1934

Holly at First

Medford, Oregon Oregon-Pacific District

Adequate Church Plant Facilities

A Growing Membership with a Vision

The Gospel Message to Southern Oregon  
in song, Sermon, and story

Radio Broadcast over KMED  
1440 on your dial

Parsonage—906 N. Central  
Telephone—4936



Rev. Arthur B. Cook  
Pastor

## First Church of the Nazarene

South 37th and "M" Street  
TACOMA, WASHINGTON

*"A Believer in Nazarene Youth"*

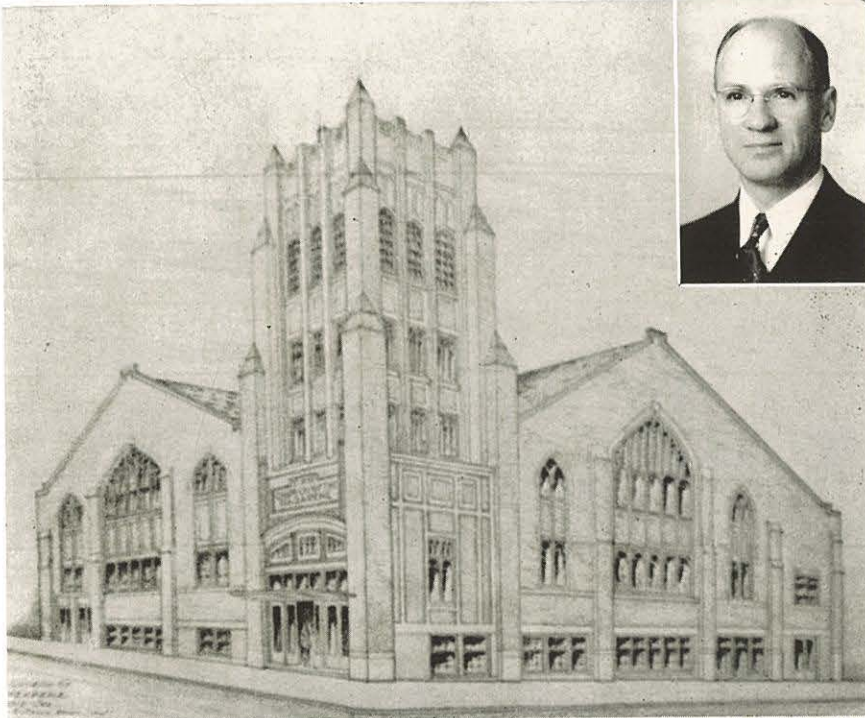
# FIRST CHURCH OF THE NAZARENE

---

“Portland’s downtown center of Evangelism”

---

Rev. Fletcher Galloway,  
Pastor



Courtesy Logan-Markham

Building when completed



CONGRATULATIONS TO

## Northwest Nazarene College

FROM THE LAND OF PROMISE

W. A. ECKEL

*District Superintendent*

346 Wyoming Avenue

Billings, Montana

W. G. McKAY

*District Treasurer*

240 Yellowstone Avenue

Billings, Montana

JOSEPH GRAY

*District Secretary*

1157 South Popular St.

Casper, Wyoming

### ROCKY MOUNTAIN DISTRICT

## First Church of the Nazarene

Third Avenue North at 33rd Street

BILLINGS, MONTANA

*"In the land of the shining mountains"  
In the church with a challenge for youth*

Alvin L. McQuay  
Pastor

## First Church of the Nazarene

609 East 20th Street

CHEYENNE, WYOMING

In Essentials, Unity ; In Non-Essentials,  
Liberality ; In All Things, Charity

A. FURMAN HARRIS, PASTOR



**Home of Samaritan Hospital School of Nursing**



**Mrs. Kinzler, R.N., B.S.N.**

For general information write  
 Director of nurses  
 Miss Agnes Miller, R.N., A.B.  
 Samaritan Hospital  
 Nampa, Idaho

*A place where patients are  
 told of God's power to  
 save from all sin.*

(15 per cent of all alumni  
 are in active Missionary Work)



**Mr. Nelson Ammons, Business Manager**

**SAMARITAN HOSPITAL**  
**NAMPA, IDAHO**





THE DOOR

*of your*

*Publishing House*

*is*

The Door of Opportunity

*in obtaining*

Progressive and Pertinent Publications

*for*

Growth in Experience and Assistance  
in Christian Service

*Over 40 years of  
Profitable and  
Faithful Service*

**Nazarene**

**PUBLISHING HOUSE**

2923 Troost Ave., Box 527  
Kansas City 10, Mo.

# N.N.C. General Missionary Society

**Inspiring Missionary Chapel Services followed by  
Prayer Meetings and Fasting every Thursday**

**Goal:** \$1,500 Church for Chicalayo, Peru

**Purpose:** To incite the students of N. N. C. to work for the success of missions.

**Motto:** The mighty hand of God is manifested in the answers to prayer requests placed in the prayer chest.

*President*—Don Peterman

*Program Chairman*—Sarah Steffin

*Vice-President*—Dave Messenger

*Treasurer*—Ray Cox

*Vice-President*—Allen Bennett

*Secretary*—Joyce Kincaid

## Nevada-Utah District

Looks to the Future

**OUR GOAL**

**“1-9-4-8 Churches by 1948”**



Un-panned Gold will be found  
as follows:

5 Cities 5000 or more population	
47 Towns 1000 to 5000 population	.....Utah
42 Towns 500 to 1000 population	
13 Towns 1000 to 5000 population	
13 Towns 500 to 1000 population	.....Nevada

Reverend H. H. Cochran,  
District Superintendent  
Box 609, Provo, Utah



TO N. N. C.

# ELECTRIC BAKERY

Extends Sincerest Congratulations for

*Past Achievements*

*Patronage*

*And Wishes for a Successful Future*

112 12th Avenue South

Nampa, Idaho

*The Store that Serves You Best*

## HOLLY MARKET

Groceries      Vegetables  
Meats

C. W. CHARLESTON, Proprietor

104 Holly

NAMPA

Phone 544-J

## The Forbidden Palace

*We Specialize in*

Chinese and American  
Dishes

1310½ 1st Street South  
NAMPA, IDAHO

ALWAYS A FRIEND OF N. N. C.—

## Idaho Free Press

*Nampa's Own Daily Newspaper*

Covering Idaho's Greatest  
Agricultural Country

MEMBERS OF THE ASSOCIATED PRESS

Hang Your Hat at

## QUICK LUNCH

“Where you can eat a meal square—  
At Prices more than fair.”

*Across from Nampa Floral*

NAMPA, IDAHO

## RANCH HOUSE

*“Service with a Smile”*

Good Food—Low Prices

NAMPA, IDAHO

It's the Ring of her choice... a beautiful "Keepsake" Diamond Ring. Every ring is selected by internationally famous experts.

118 12th Ave. S.  
NAMPA, IDAHO



Keepsake BETHANY

Each design is the proud accomplishment of skilled artists. The name "Keepsake" is inscribed in every ring.

Lester  
Hamilton  
Jeweler

## NU-WAY CAB

Fast, Courteous Service

*A real friend of the College*

Nampa, Idaho

Phone 1829

## BACON Jewelers

Choose Bacon's  
When you want  
to buy that  
Ring.



A Complete  
line of the  
finest in  
Jewelry.

116 12th Ave. South  
NAMPA, IDAHO



## HOTEL BOISE

PRESENTS THE FINEST IN  
COMFORT AND STYLE

*Visit Us when You Visit Boise*

BOISE, IDAHO



# CITY DYE WORKS

*"Let George Do It"*

Popular students are smartly dressed . . .  
... their clothes are always neatly pressed.

**CLEANERS**

**DYERS**

**HATTERS**

GEORGE L. MORRIS, Proprietor

DAVID E. NYBERG, College Agent

114 12th Ave. South

NAMPA, IDAHO

Phone 572

# NAMPA FLORAL CO.

JERRY RANDALL, MANAGER

*"Say it with Flowers—But say it with Ours"*

**Flowers for All Occasions**

1207 2nd Street South

Nampa, Idaho

# PARSON'S SHOE SHOP

First Street South

Nampa, Idaho

**Better Than Most**

# VIC STOLLE DRUG CO.

*"Your Druggist"*

**Nampa's Finest Prescription Pharmacy**

PHONE 118

1201 First Street South

Nampa, Idaho

## LEADING STUDENTS

Of the Fine Art of Living proclaim the Owyhee Hotel tops for stops in Idaho and finest for food. Good heads make their headquarters at The Owyhee when visiting Boise.

## OWYHEE HOTEL

BOISE, IDAHO  
C. FREDMANN, Mgr.

## —DIXIE'S— ICE CREAM SHOP

"Let us serve you in a pleasant atmosphere that is indeed a treat"

*"Service with a Smile"*

CHARLIE FAHNAHALZ, MANAGER

1306 2nd Street South

NAMPA, IDAHO

Phone 1240

## TOWN TALK CAFE

Comfortable Air-Conditioned Cafe for Our Patrons

*"A Cafe of Home Cooked Foods"*

A Place of Courteous, Efficient Service

1120 1st Street South

Nampa, Idaho

## PENNYWISE DRUG STORE

Everything in the Way of Drugs

*"Always at a lower price"*

PRESCRIPTION CHEMIST

1305 2nd St. South

NAMPA, IDAHO

Phone 154



# LINDSEY AND SONS

## FORD—MERCURY—LINCOLN SALES AND SERVICE

Servicing all makes of cars and trucks  
EXPERT BODY, FENDER, and REPAIR DEPARTMENT  
USED CAR LOT

223 11th Avenue South  
N A M P A

Phone 248

# *R and V* OIL COMPANY

STANDARD OIL PRODUCTS

TIRE AND BATTERY SERVICE  
CAR WASHING LUBRICATION

24-hour Service at  
124 11th Avenue South, Nampa—Across from post office  
N A M P A C A L D W E L L W I L D E R

# CASE FURNITURE CO.

1414 1st Street South, Nampa, Idaho

Home of  
FINE FURNITURE—COURTEOUS TREATMENT

E. T. KELLEY, Manager  
Other Stores at EMMETT and CALDWELL

# GREENLEAF CREAMERY

ICE CREAM  
For That College Party

C. C. CANNON  
1407 2nd St. S. N A M P A, I D A H O Phone 1245

# GEM STATE PRINTING CO.

PRINTING

PUBLISHING

LITHOGRAPHING

"N.N.C. Crusader"

Printers of  
"Messenger"

"Intermountain News"

Steel Files and Office Equipment

1310 2nd St. S.

NAMPA, IDAHO

Phone 86

JACK and OPAL'S

## *Peter Pan*

*"We like to serve Students"*

1206 First Street South

::

Nampa, Idaho

## NAMPA DRY CLEANERS

"When your clothes are unbecoming to you, they should be coming to us"

RAY MORRIS, Manager

1015 Second Street South

PHONE 29

Nampa, Idaho

## Showalter Chevrolet Company

CHEVROLET and OLDSMOBILE DEALER

Body and Fender Work—Repair on All Cars

1011 Second Street South

NAMPA

PHONE 12

IDAHO



# Dobbs Brothers Motor Co.

HUDSON CARS — G. M. C. TRUCKS

Parts — Service — Body and Fender Shop

*Complete Lubrication System*

Third Street 9th Ave. South

Telephone 889

NAMPA, IDAHO

## NAMPA FINANCE COMPANY

Personal Loans on  
Signature, Livestock, Auto, and Furniture

223 13th Ave. South

Nampa, Idaho

H. B. GIESE and VAN N. MOAD

References: First Security—Idaho First Nat'l

## REAL ESTATE BROKERS

Phone 819—Nampa, Idaho

Dr. V. C. Belknap—  
—Dr. Horace Belknap

Office—1114 First Street South  
Phone 300 Nampa, Idaho

Dr. Ray E. Blickenstaff

DENTIST

Studio Dental Office—Tel. 113  
1023 Fourth Street South Nampa, Idaho

Desks, Chairs, Files, Safes, Rubber Stamps  
Stationery, Gifts, Greeting Cards

*Strawn-Kalbus*

Office Supplies

115 13th Ave. South, Nampa, Idaho, Phone 372J  
Jarvis W. Kalbus, Mgr.

## Kampus Korner Grocery

Visit our Snack Bar

*Just Off the Campus and  
You're Served with a Smile*

## TIMM'S BARBER SHOP

NAMPA

IDAHO

## Winther's Music Co.

*"A Complete Line of Music"*

Baldwin Pianos  
Stranbery Carlson Radios

Teachers' Supplies

PHONE 564  
123 12th Ave. South Nampa, Idaho

## Greystone Cab Co.

Quick — Clean — Efficient Service

Phone 20

111 12th Ave. South Nampa, Idaho

## Fletcher's Typewriter Exchange

A Complete System

BOISE

IDAHO

## THE TOPPER

"A Good Place to Eat"

JOE NEFF, Prop.

NAMPA

IDAHO

## City Cab Company

E. R. THOMPSON, Prop.  
Phone 44

24-Hour Service

Bonded and Insured

124 13th Avenue South

Nampa, Idaho

# EVANS PHOTO STUDIO

PORTRAITS AND COMMERCIAL PHOTOGRAPHY

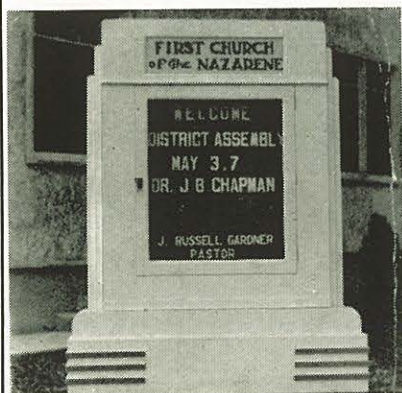
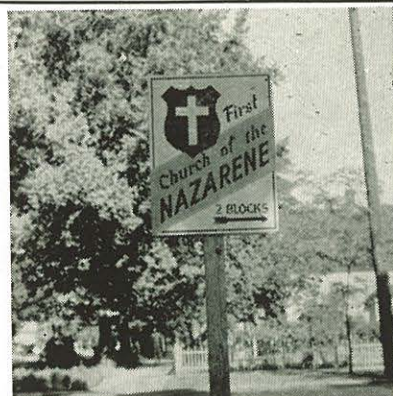
*"When you need that picture call your photographer"*

Phone 102 W

1308½ 1st Street South

Nampa, Idaho

Advertise  
Your  
Church  
With



Nationally  
Approved  
Nazarene  
Advertising

For information write  
Maxwell Advertising Co.  
Nampa, Idaho



# *You and your friends*

- Will always prize a truly fine Wright portrait.  
For many years the photographer for the OASIS.
- Portraits from Wright's have won National Acclaim.

*For the Finest in Photography*

## *Wright's Studio*

NAMPA, IDAHO

PORTRAITS

PHOTOGRAPHY

## *Garrett Studio*

*of Fine Photography*

**We enjoyed being your photographer for the  
1946 OASIS**

Read and believe James 5:14-15

**New Pasco Theater Building**

**Pasco, Washington**

# *Autographs*



# *Autographs*

# *Autographs*



# *Autographs*

# *Autographs*



# *Autographs*

---

*Index*





# Faculty and Administration

## — A —

Allison, Ethel B. ....	28
Arneson, Esther .....	29

## — B —

Bellamy, Maisie .....	31
Bonner, Aletha .....	31
Bower, Dr. May E. ....	27

## — C —

Carlson, Elaine K. ....	30
Cherrington, Hazel .....	31
Corlett, Mrs. Elba .....	29
Corlett, Dr. L. T. ....	24, 25, 26
Culver, Thelma B. ....	27

## — D —

Davis, Esther .....	31
Davis, Wanda .....	28
Demmer, Juanita .....	27
Dooley, Bertha R. ....	27, 97

## — E —

Edgar, Mrs. Charlotte .....	29
Emerson, J. Calvin .....	27
Ernest, Eleanor .....	30
Ernest, Liberty .....	30

## — F —

Finkbeiner, Arnold J. ....	30, 86
----------------------------	--------

## — G —

Gish, Delbert R. ....	9, 27, 32
-----------------------	-----------

## — H —

Harris, Mildred .....	
Hostetter, Beryl .....	31

## — J —

Janosky, Joseph .....	30
-----------------------	----

## — K —

Klundt, Rudolph .....	31
-----------------------	----

## — L —

Laughlin, D. G. ....	28
Laughlin, Matilda .....	29
Lee, LaMont .....	31, 112

## — M —

Mjaseth, Margaret Ann .....	30, 86
Mumau, Geneva .....	29

## — O —

Oldfield, Peggy .....	30, 87
-----------------------	--------

## — P —

Peterson, Dorothy .....	30
Phillips, Eunice .....	29



— R —

Ray, Roy Fremont .....	29
Reed, Marjorie .....	30
Rice, Maud .....	6, 28
Riley, Rev. John E. ....	27, 97, 104

— S —

Sharp, Guy E. ....	28
Spurbeck, Audrey .....	30, 87
Sullivan, David J. ....	29
Sullivan, Alfred .....	30, 38, 94
Sutherland, Francis C. ....	28
Swann, Alline .....	29, 88

— T —

Tait, Mary .....	31
Taylor, E. Roger .....	29, 89
Thompson, Howard .....	31
Tillotson, Donald B. ....	28, 105
True, Esther .....	28

— W —

Waller, Helen .....	31
Washburn, Marian B. ....	27
Wesche, Dr. Henry C. ....	29
Wilson, Helen .....	28
Wilson, Mallalieu A. ....	27, 94

# College

## — A —

Aggola, Leona .....	39, 74, 109
Alexander, Violet .....	51
Allee, Ben .....	39
Allee, Hazel .....	51
Allen, Carrol .....	45
Anderson, Doris .....	57
Angel, Ruth .....	57
Arneson, Esther .....	29, 57

## — B —

Bailey, Ruth .....	57
Barber, Rose Marie .....	57
Barker, Rutheda .....	57
Bass, James .....	51
Bassett, Betty .....	57
Bates, Rose Emma .....	51, 76
Battin, Mary Alice .....	57
Baustian, Sydney .....	57
Beck, Nesta .....	39
Becker, Wilbur .....	51
Bellamy, Maisie .....	31, 45, 79
Bennett, Allen .....	45
Berkley, Clarence .....	45
Berringer, Edna .....	
Beukelman, Delmar .....	57
Bevens, Lonnie .....	45
Bittleston, Dorothea .....	51
Blickenstaff, Velma .....	103
Blum, Lowell .....	51, 80, 106
Bone, Dolores .....	51, 77, 97, 130
Bowen, Bertha .....	47
Bozarth, Beulah .....	45
Bozarth, Donald .....	57, 79
Bozarth, Merle .....	51, 74

Bradley, Joanne .....	57
Bridge, Helen .....	57
Briggs, Aletha .....	57
Bruner, Gladys Marie .....	39
Bruner, James .....	51
Bruner, Keith .....	57
Buchanan, Sidney .....	45
Bundy, Iris .....	51
Burkey, Emery .....	45
Burkhart, Joanne .....	57, 78
Burton, Loren .....	64
Burton, Myrtle .....	64
Butler, William .....	45, 96
Byron, Lloyd .....	57

## — C —

Cameron, Lorene .....	39
Carrel, Lois .....	51
Campbell, Hattie .....	57
Carpenter, Clare .....	57
Carpenter, Dolores .....	57
Chenoweth, LaVonne .....	51
Cherrington, Don .....	57
Clark, Charlotte .....	45, 97
Clough, Homer .....	39
Cockerham, Esther .....	57
Conaway, Ralph .....	57
Conner, Betty Jean .....	57
Cooke, Carol .....	58
Cowley, Mary Esther .....	51
Cox, Raymond .....	45
Cozad, Don .....	45
Cozad, Faith .....	39
Craig, Oneida .....	58
Craker, Donald .....	64



Cramer, Ruth .....	45
Crisp, Joan .....	58
Crofford, Juanita .....	58
Cronrath, Ruth .....	51
Curtis, Elmer .....	58

— D —

Dahl, Obed .....	51
Dale, Don .....	51, 81, 83, 106
Daly, Marion .....	58
Daniels, Harold .....	50, 51, 74, 97, 106
Davis, Pat .....	58
Davis, Wanda .....	28, 39, 101, 134
Day, Evelyn .....	58, 81, 119
DeVries, Emma .....	58
Dick, Ruth .....	58
Dilley, D. L. ....	45
Dougherty, Earl .....	51, 106
Dowd, Ed .....	32, 39, 134
Durrand, Jeanne .....	58, 77

— E —

Eckert, Arleigh .....	58
Edes, Betty .....	45
Edgar, Ervin .....	45
Edgar, Hazel .....	58
Edwards, Doris .....	
Edwards, Harold .....	58
Elmore, Lucile .....	51
Elmore, Marjorie .....	51
Elmore, Emerson .....	40
Emerson, Fairy .....	58
Ernest, Elvin .....	40, 95, 108
Ernest, Liberty .....	30, 40
Evans, Elizabeth .....	46

— F —

Faul, Betty .....	58
Feltar, Ruby .....	58
Fischer, Ruth .....	58
Fisher, Alden .....	58, 75, 97
Foote, Elsie .....	51

Foote, Martha .....	58
Foster, Sandy .....	58, 78
Fowler, Millicent .....	46
Franklin, Warren .....	46, 75, 135
Frazier, Hester .....	40
Fritch, Bethel .....	40, 76
Furtwangler, Conway .....	52

— G —

Gaines, Geraldine .....	40
Gardner, Edna .....	46
Gardner, Juanita .....	46
Gardner, Lois .....	58
Gardner, Maxine .....	52
Galloway, Virginia .....	46
Ganoung, Betty .....	58
Gause, Frances .....	52
Gould, Dorothy .....	58
Gebhardt, Lloyd .....	58, 78
Gray, Richard .....	52
Grover, Ardeth .....	32, 74, 135
Gwynn, Arthur .....	46

— H —

Haile, Shirley .....	59, 130
Haldy, Ed .....	40
Hammer, Edwin .....	59
Hansford, George .....	59, 81
Harden, Marjorie .....	59
Harding, Bette .....	59, 119
Harmon, Eunice .....	59
Harman, Mary .....	40, 84, 135
Harper, Mary .....	52, 77, 97
Harris, Carol .....	46
Harris, Lewis .....	59
Harrison, Anita .....	59
Harryman, Nellie .....	52
Haskins, Kathryn .....	59
Hawk, Naomi .....	52
Hawks, Ulala .....	59
Hayes, Myrtle .....	52
Heberlein, Marcella .....	59
Heimbach, Mabel .....	64

Helliwell, Kathryn .....	59
Hempel, Dean .....	52, 81, 112, 131
Henderson, Ralph .....	52
Herron, Edith .....	59
Herron, Margie .....	52
Herron, Ruth .....	59
Herzog, Esther .....	59
Hill, Delpha .....	59
Hill, Doris .....	59
Hill, Gladys .....	46
Hills, Orrin .....	40, 78, 112, 135
Hilty, Virginia .....	46
Hobson, George .....	52
Hoidal, Edith .....	52, 99
Howell, Roy .....	40, 79
Hull, Ralph .....	59
Hutchings, Virginia .....	59
Hutchinson, Darrold .....	64

— J —

Jenkins, Elaine .....	59, 77
Jennings, Wanneta .....	52
Jensen, Eileen .....	40, 74
Jensen, Faye .....	59
Jensen, Gladys .....	59
Johnson, Edwin .....	59
Johnson, Jerald .....	56, 59, 74
Johnson, Marion .....	60
Johnson, Wayne .....	60, 119
Johnson, Wesley .....	60, 81, 119

— K —

Kelley, Curtis .....	52
Kembel, Molly .....	52
Kern, Claire .....	52, 77
Kern, Elaine .....	52, 81
Kiel, Bob .....	112
Kincaid, Grace .....	46
Kincaid, Joyce .....	40, 75
Kincaid, Olive .....	60

Kirley, Virginia .....	46, 99
Kitson, Dorothy .....	46
Klinner, Eleanor .....	60
Klinner, Victor .....	46
Kludt, Rudolph .....	31, 46
Kollin, Hilda .....	41

— L —

Lancaster, Floyd .....	60
Lancaster, Rosalee .....	47
Lang, Pauline .....	52, 77
Laughlin, Esther .....	47
Laughlin, Clara .....	60
Lawrence, Olive .....	47
Lee, Connie .....	60
Lindsey, Eula Mae .....	52
Lintz, Eunice .....	60
Long, Dorothy .....	41, 100, 135
Long, Ruth .....	41, 135
Long, Wendell .....	60
Litsey, Harold .....	47
Litsey, Roy .....	53, 81
Lorbeer, Margaret .....	53
Ludlow, Glenn .....	60
Lutz, Harlan .....	60

— M —

Manley, Dorothy .....	53
Manley, Erlene .....	60
Manley, Robert .....	53
McCoy, Clyde .....	60
McDowell, Eugene .....	41
McKenzie, Eva .....	53
Merk, Alma .....	60
Messenger, David .....	53, 97
Michel, Joyce .....	53
Midby, Harry .....	60, 77
Midby, Willard .....	41
Miller, Ardath .....	103
Miller, Luceal .....	47



Miller, Patsy .....	60
Miller, Robert .....	60
Miller, Ruth .....	53
Mills, Esther .....	60
Mishler, Kenneth .....	
Mjaseth, Margaret .....	30, 86
Moss, Maxine .....	47
Mulligan, James .....	60
Mylander, Helen .....	47

— N —

Newell, Neva .....	41, 75
Newell, Nona .....	60
Nelson, Naomi .....	47
Newton, Maryellen .....	53
Nutt, Lillian .....	53
Nyberg, David .....	32, 47, 97

— O —

Oldfield, Margaret .....	30, 41, 87, 135
Owen, Mary .....	60

— P —

Paul, Evangeline .....	47
Paulson, Ralph .....	53, 77
Perry, Catherine .....	47
Pershall, Alice .....	53
Pershall, Roscoe .....	47
Peterson, Catherine .....	53
Peterson, Clarence .....	60, 106
Peterson, Edna .....	41
Peterson, Dorothy .....	30, 47, 80, 135
Peterson, Mary .....	53
Peterman, Don .....	44, 47, 75, 109, 135
Peterman, Ruth .....	47
Phillips, Jessie .....	41
Phillips, Maxine .....	61
Pinkston, Pearl .....	61
Popejoy, Mary .....	41

Potter, Kenneth .....	61, 106
Powell, Eunice .....	41
Pyrtle, Christle .....	53
Pyrtle, Carolyn .....	41

— R —

Rambo, Helen .....	61
Ranum, James .....	54, 81
Ray, Delma .....	54
Reed, Marjorie .....	30, 47, 77, 93
Rennick, Merle .....	61
Richards, Frank .....	61
Rickman, Virginia .....	47, 96
Robertson, Cecil .....	47
Robbs, Jeanette .....	61
Robirts, Audrey .....	61
Rodman, Doris .....	47, 75
Rogers, Avannelle .....	79
Rogers, Harold .....	64
Rogers, Marcella .....	41, 54
Roseboro, Stanley .....	61
Roseboro, Wallace .....	32, 47, 96
Rothenberger, Eleanor .....	61
Ruby, Beatrice .....	61
Rutledge, Ruth .....	61

— S —

Satter, Elvira .....	54
Schmidt, Betty .....	61
Schnasse, Irene .....	64
Scholten, Lois .....	61, 77, 130
Shafer, Dorothy .....	54
Shoemaker, Fred .....	48
Shoemaker, Ralph .....	61
Shoemaker, Ruth .....	61
Siefarth, Donna .....	42
Siefarth, Ernie .....	48, 112
Sievers, Harriet .....	61
Simmons, Leslie .....	61
Slemmer, Leta .....	48

Smith, Audrey .....	48
Smith, Delight .....	61
Smith, Elwood .....	48, 77, 106
Smith, Geneva .....	61
Smith, Mary Ellen .....	61
Smith, Wesley .....	54, 79
Smyth, Orville .....	64
Snyder, Eldon .....	32, 61, 106
Sodorff, Betty .....	61, 97
Sorenson, Loretta .....	61
Speer, Russell .....	61
Spencer, Marguerite .....	42, 78, 135
Spencer, Peggy .....	62
Sporleder, Corleen .....	54, 79, 130
Sporleder, Robert .....	32, 48, 80, 135
Sprenger, Bertha .....	48
Spry, Margaret .....	54
Spurbeck, Audrey .....	30, 42, 87
Squires, Norma Lee .....	48
Stanfield, Geneva .....	54, 81
Stanton, Juanita .....	62
Stanton, Rex .....	48
Steffan, Sarah .....	48
Stevens, Evelyn .....	62
Steward, Mahlon .....	48
Stratton, Nellie .....	48
Stratton, Twila .....	62, 130
Sturtevant, Lucy .....	62, 79
Sullivan, Alfred .....	30, 38, 42, 76, 112
Sullivan, David .....	29, 42, 93
Sundan, Grace .....	54
Surerus, Viola .....	62
Sutherland, Margaret .....	54

— T —

Tait, Lexie .....	62
Taves, Verona .....	32, 42, 75, 82, 135
Tame, Elwood .....	48
Taylor, Geraldine .....	62
Theiss, Lorraine .....	62
Theissen, Emma .....	48
Thomale, Dora .....	62

Thompson, Howard .....	31, 142
Tillotson, Beulah .....	
Timmreck, Betty Mae .....	62
Timmreck, Keith .....	62
Tolbert, Robert .....	42
Tolson, Ward .....	62
Tracy, Joseph .....	54

— V —

Vail, Elmore .....	97, 112
Vawter, Esther .....	64

— W —

Walker, Marcia .....	62
Walker, Carolyn .....	62
Waller, Carrol .....	62
Waller, Thelma .....	54
Wallace, Loree .....	62
Walton, Myrtlebelle .....	54
Webb, Olive .....	54
Wesche, Mary .....	32, 54
Webber, Frances .....	62
Wheeler, Wilbur .....	62
Wibbels, Sara .....	62
Wilde, Carl .....	62
Wilde, Pauline .....	62
Wilkes, Margaret .....	48
Williamson, Don .....	62
Wilson, Dale .....	62
Wordsworth, Paul .....	62

— Y —

Yeend, Helen .....	42, 81
York, Leonard .....	64

— Z —

Zimbelman, Leah .....	54
Zimmerman, Howard .....	33, 54, 81, 99
Zink, Howard .....	42
Zink, Laura .....	42



# Academy

## — A —

Alley, Loraine .....	68, 80
Armstrong, Gilbert .....	68

## — B —

Bates, LeRoy .....	66
Bauguess, Genevieve .....	68
Bauerle, David .....	70
Bennett, Laura .....	70
Bishop, Lilly Ann .....	70
Blackwell, Charlotte .....	71
Bowman, Ercil .....	70
Breakey, Lois .....	71
Brink, Pearl .....	68
Butcher, Ed .....	68

## — C —

Cameron, May .....	70
Canaday, Rae .....	71
Carpenter, Dale	
Carrel, Eddie	
Cary, Roberta	
Cherrington, Del .....	71
Chittenden, Lela .....	71
Cockerham, Rachel .....	68
Conrey, Jean .....	71
Cramer, Doryce .....	66
Crowe, James	

## — D —

Darrow, Richard	
Davis, Amy .....	68, 74
Davis, Dorothy .....	70, 78

Day, Louise .....	66
Dockter, Irvin .....	68
Duncan, Darlyne .....	68
Duncan, LuVerne .....	71

## — E —

Edington, Mary .....	68
Emerson, Earl .....	33, 68
Estabrook, Carol .....	68

## — F —

Finkbeiner, Arnold .....	70
Friesen, Dave .....	68, 122
Frisk, Joy .....	66

## — G —

Gregg, Marjorie .....	66
Gretzinger, Harold	

## — H —

Hawkins, Anita .....	71
Hector, Gilbert .....	70
Hector, Nathalia .....	71
Hines, Darlene .....	66
Hines, Dwayne .....	70
Hochhalter, Ben	
Howison, Barbara .....	71

## — J —

Jennings, Roy .....	68
Johnson, Clarice .....	68
Johnstone, Ethel .....	70

Jones, Reva ..... 68

— K —

Kirley, Patricia

Knapp, Dale

— L —

Laughlin, Eddie ..... 70

Laughlin, Owen ..... 70

Laughlin, Jim ..... 71

Likens, Faye ..... 66

Lunde, Merton

— M —

Manley, Doris ..... 66

Manley, Mary ..... 68

Manley, Wilma ..... 71

Markus, Betty ..... 68

Maxwell, Donna ..... 71

McCorkle, John ..... 69

Miller, Marilyn ..... 71

Mitchell, Alva ..... 71

Mobley, Geneva ..... 69

Morgan, Wilbur ..... 69

— N —

Nelson, Gene ..... 66

— P —

Painter, Bud ..... 69

Painter, Dan ..... 71

Palmer, Jackie ..... 71

Palmer, Jerry

Peppely, Dolores ..... 70

Peterson, Bethel ..... 70

Peterson, Freda ..... 70, 77

Peterson, Harlan ..... 71

Pinkston, Reta ..... 70

Pullen, Lyndol ..... 70

— R —

Rapp, Carole ..... 66

Robberson, Louise ..... 69

Robinson, Lois ..... 67

Rorex, Maxine ..... 71

Russell, Ambie ..... 69

Russell, Mary Louise ..... 71

Rothenberger, Murray ..... 71

— S —

Schober, Lois

Sharp, Carol ..... 69

Shoemaker, Marvin ..... 70

Shute, Eloise ..... 69

Smith, Afton ..... 69

Smith, Nina ..... 71

Smith, Norma ..... 71

Soltz, Lura ..... 71

Stathopoulos, Faye ..... 67

Stratton, Barbara ..... 67

Surerus, Eunice ..... 67

Sutherland, Paul ..... 70

Sutton, Gerald ..... 69

— T —

Taylor, Naomi ..... 69

Thompson, Harold ..... 67

Tock, Gladys ..... 71

Tock, June ..... 67

Trovillion, DeLois ..... 71

Trovillion, Nadine ..... 69

— V —

Vail, Lois ..... 69

Vulk, Ocie ..... 70



— W —

Walker, Ivan .....	71
Ward, Muriel .....	69
Webb, Juanita .....	70
Webb, Verna .....	69
Weber, Lois .....	69, 77
Wells, Chester .....	71
Williams, Betty .....	69

Williamson, Jim

— Y —

Young, Al .....	69
-----------------	----

— Z —

Zimmerman, Charlotte .....	67, 75, 97
----------------------------	------------